



RC 80-20 6P

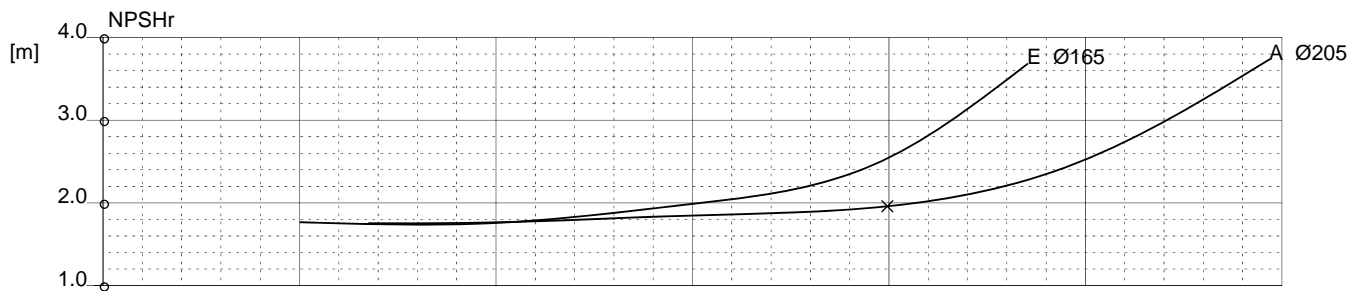
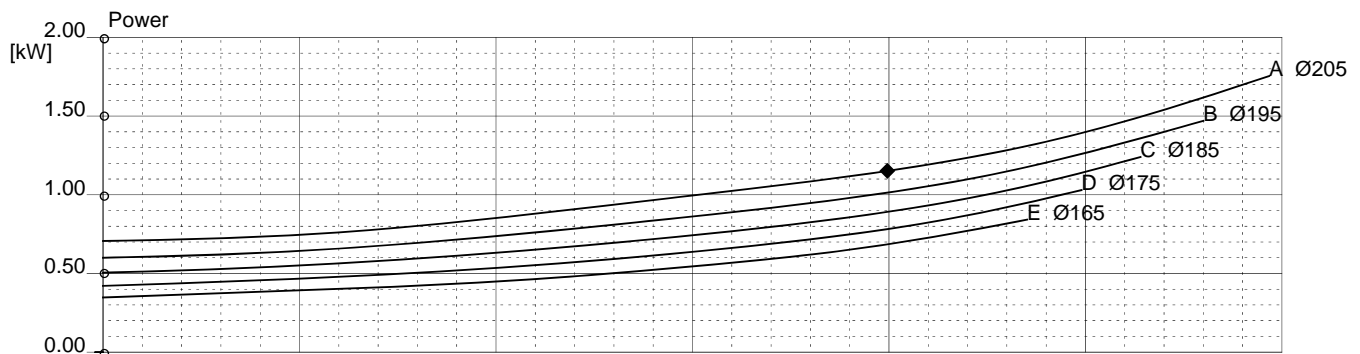
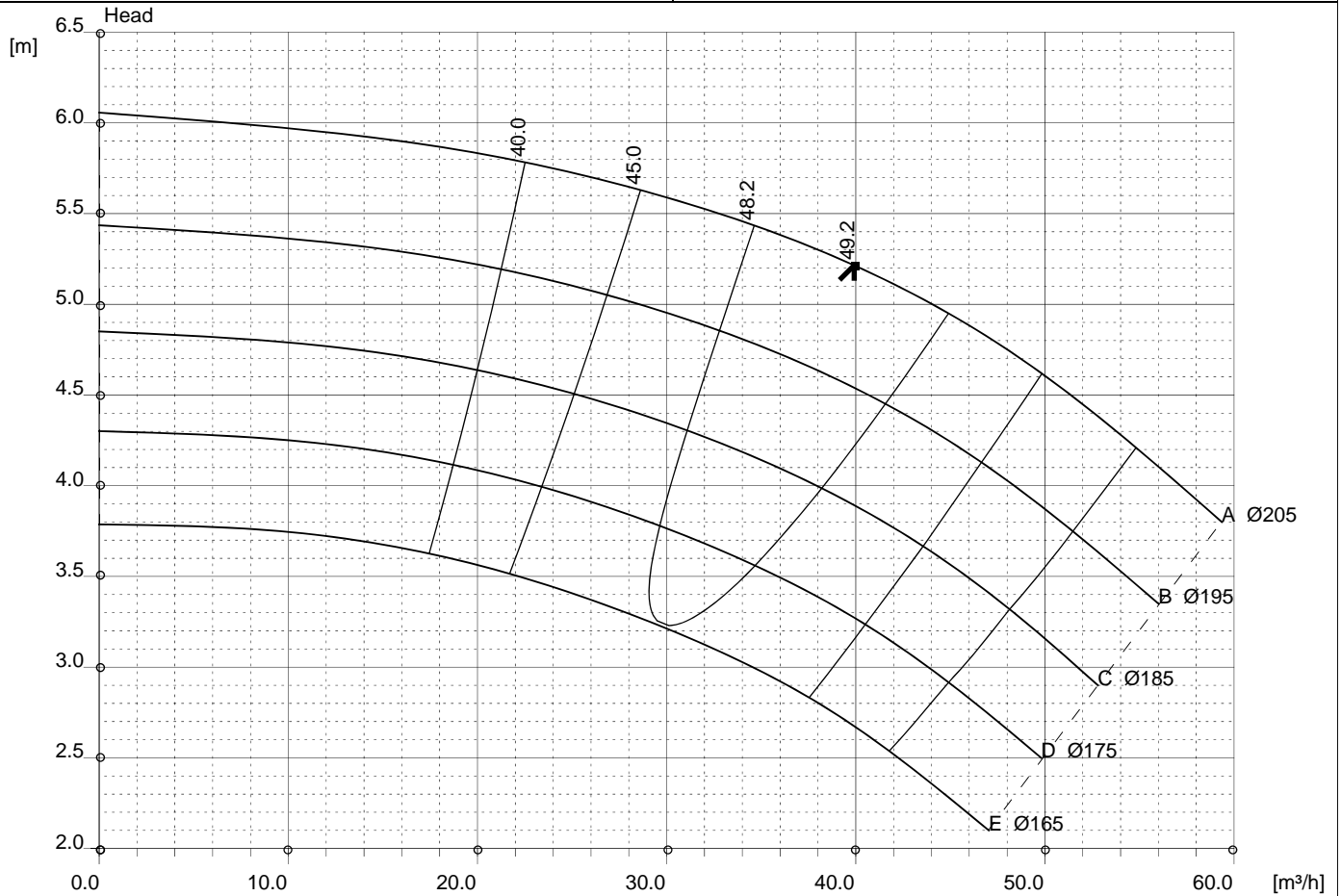
970 [rpm]

1 Stage

Curve N.

T-1169

Max. diameter 205 [mm]	Min. diameter 165 [mm]	Maxspeed 1199 [rpm]	Suction Ø 100 [mm]	Discharge Ø 80 [mm]
Density 1 and viscosity 1 cSt		Replace any previous edition		



Comments						
Diffuser	Impeller	NS 30	SSS 62	Author	Date Jan20,2011	Revision