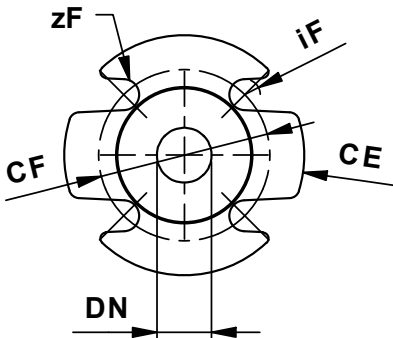
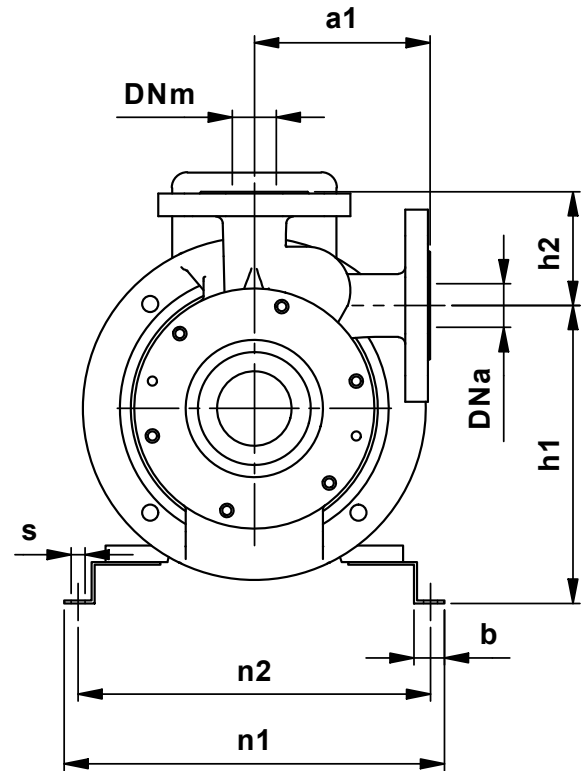
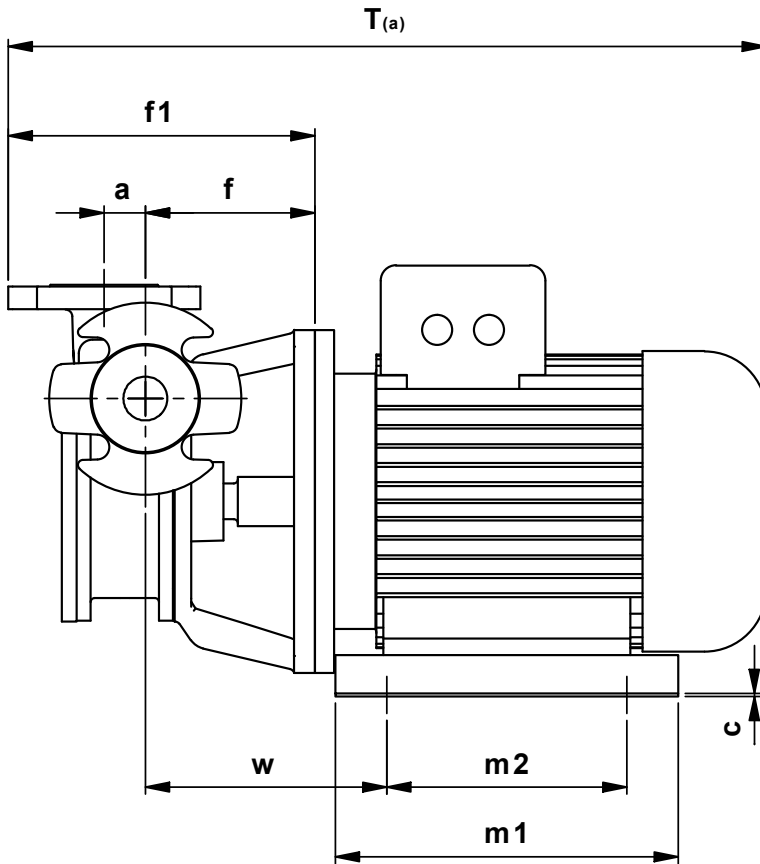


| N.    | DESCRIZIONE                | DESCRIPTION         |
|-------|----------------------------|---------------------|
| 102   | Corpo                      | Casing              |
| 109   | Elemento diffusore         | Interstage diffuser |
| 161   | Coperchio del corpo l.o.c. | Casing cover N.D.S. |
| 183   | Piede di appoggio          | Support foot        |
| 230   | Girante                    | Impeller            |
| 344   | Lanterna motore            | Bracket lantern     |
| 412.2 | O-ring                     | O-ring              |
| 400.1 | Guarnizione corpo          | Casing gasket       |
| 433.1 | Tenuta Meccanica           | Mechanical seal     |
| 506   | Paraspruzzi                | Deflector           |
| 801   | Motore elettrico           | Electric motor      |
| 900.2 | Prigioniero con dado       | Stud with nut       |
| 900.6 | Prigioniero con dado       | Stud with nut       |
| 901.4 | Vite T.E.                  | Hex head screw      |
| 904.1 | Grano                      | Screw               |
| 921   | Ghiera                     | Impeller nut        |
| 921.2 | Ghiera cuscinetto          | Bearing locking nut |
| 932.3 | Anello di sicurezza albero | Shaft circlip       |
| 940.1 | Linguetta girante          | Impeller key        |



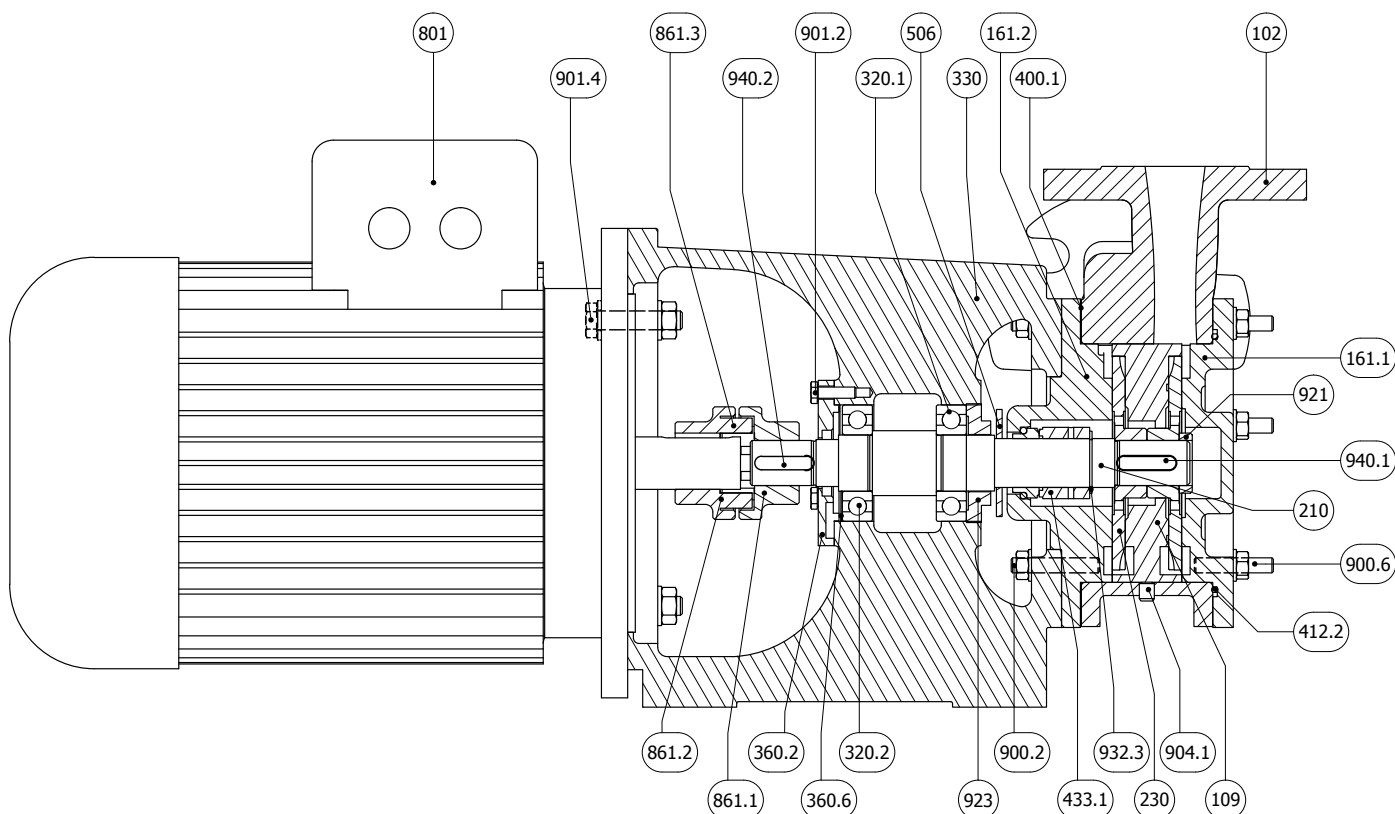
| Dimensioni Flange / Flange Dimensions<br>(PN 25 EN 1092-2) |     |     |    |    |
|------------------------------------------------------------|-----|-----|----|----|
| DNa / DNm                                                  | CE  | CF  | zF | iF |
| 32                                                         | 140 | 100 | 4  | 18 |

| ACCOPPIAMENTO POTENZA - POLARITÀ / GRANDEZZA MOTORE<br>POWER - POLARITY / MOTOR SIZE COUPLING |        |      |      |     |      |      |      |
|-----------------------------------------------------------------------------------------------|--------|------|------|-----|------|------|------|
| 2POLI                                                                                         | GRAND. | 71   | 80   | 80  | 90S  | 90L  | 100L |
|                                                                                               | kW     | 0,55 | 0,75 | 1,1 | 1,5  | 2,2  | 3    |
| 4POLI                                                                                         | GRAND. | 80   | 80   | 90S | 90L  | 100L | 100L |
|                                                                                               | kW     | 0,55 | 0,75 | 1,1 | 1,5  | 2,2  | 3    |
| 6POLI                                                                                         | GRAND. | 80   | 90S  | 90L | 100L |      |      |
|                                                                                               | kW     | 0,55 | 0,75 | 1,1 | 1,5  |      |      |

| Taglia<br>Size | Motore Elettrico<br>IEC Motor | DIMENSIONI - DIMENSION [mm]<br>Pompa - Pumps |     |    |     |     |     |     |    |     |     |     |     |    |    |     | Peso <sup>(a)</sup><br>Weight |    |
|----------------|-------------------------------|----------------------------------------------|-----|----|-----|-----|-----|-----|----|-----|-----|-----|-----|----|----|-----|-------------------------------|----|
|                |                               | DNa                                          | DNm | a  | a1  | f   | f1  | h1  | h2 | m1  | m2  | n1  | n2  | s  | b  | w   | T(a)                          | Kg |
| 13             | 90                            | 32                                           | 32  | 30 | 128 | 118 | 217 | 185 | 84 | 230 | 135 | 211 | 191 | 10 | 22 | 180 | 553                           | 34 |
| 14             | 100                           | 32                                           | 32  | 30 | 128 | 123 | 223 | 205 | 84 | 250 | 175 | 247 | 227 | 10 | 22 | 176 | 598                           | 44 |
| 15             | 100                           | 32                                           | 32  | 30 | 128 | 123 | 223 | 205 | 84 | 250 | 175 | 247 | 227 | 10 | 22 | 176 | 598                           | 53 |

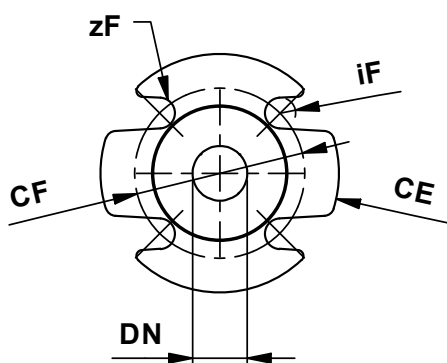
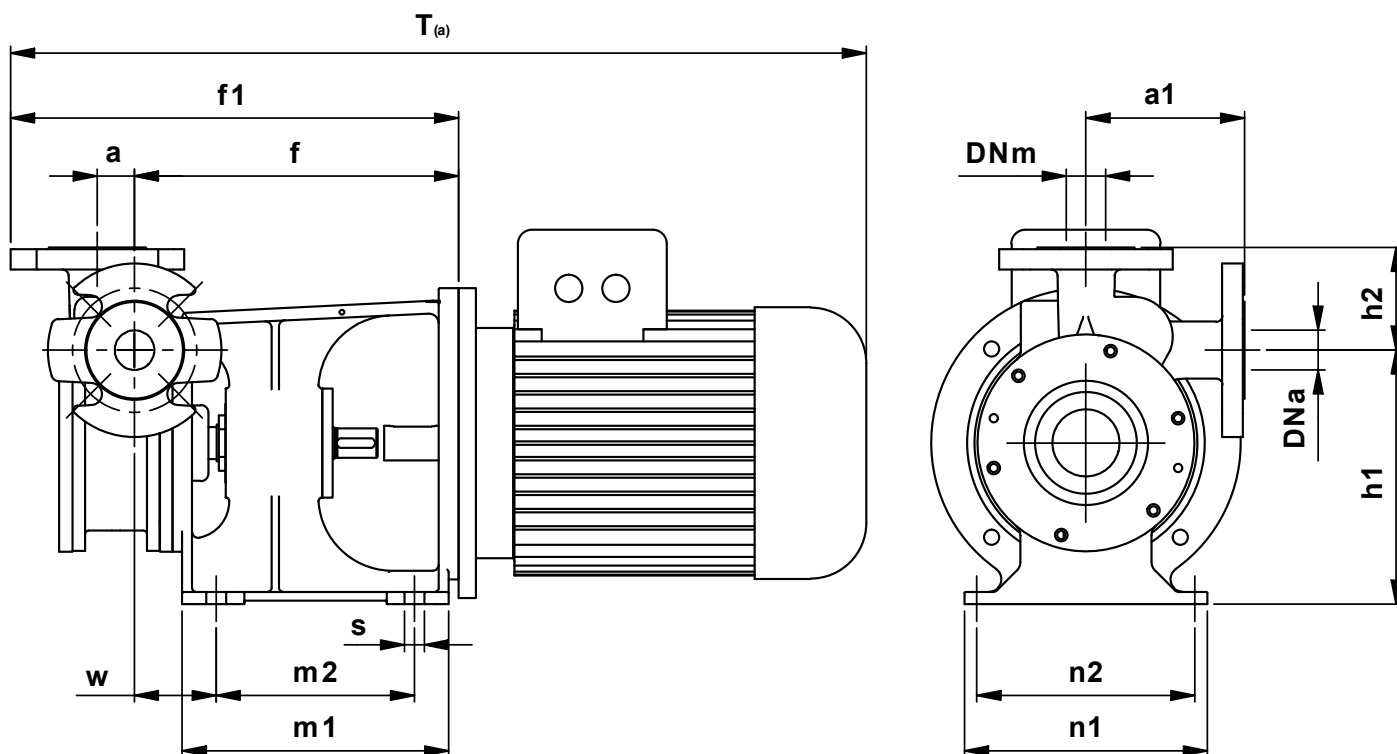
Quote e pesi suscettibili di variazione  
Dimensions and weights are subject to variations

<sup>(a)</sup> Quota indicativa può variare in funzione della marca del motore  
Not binding dimension that can change according to motor brand



| N.    | DESCRIZIONE                | DESCRIPTION         |
|-------|----------------------------|---------------------|
| 102   | Corpo                      | Casing              |
| 109   | Elemento diffusore         | Interstage difuser  |
| 161.1 | Coperchio del corpo I.o.c. | Casing cover N.D.S. |
| 161.2 | Coperchio del corpo I.c.   | Casing cover D.S.   |
| 210   | Albero                     | Shaft               |
| 230   | Girante                    | Impeller            |
| 320.1 | Cuscinetto a sfere I.o.c.  | Ball bearing N.D.S. |
| 320.2 | Cuscinetto a sfere I.c.    | Ball bearing D.S.   |
| 330   | Supporto                   | Bearing housing     |
| 360.2 | Coperchio cuscinetto I.c.  | Bearing cover D.S.  |
| 360.6 | Molla di compensazione     | Compensation sping  |
| 412.2 | O-ring                     | O-ring              |
| 400.1 | Guarnizione corpo          | Casign gasket       |
| 433.1 | Tenuta Meccanica           | Mechanical seal     |
| 506   | Paraspruzzi                | Deflector           |

| N.    | DESCRIZIONE                | DESCRIPTION              |
|-------|----------------------------|--------------------------|
| 801   | Motore elettrico           | Electric motor           |
| 861.1 | Semigiunto lato pompa      | Half coupling pump side  |
| 861.2 | Semigiunto lato motore     | Half coupling motor side |
| 861.3 | Elastomero giunto          | Coupling elastomer       |
| 900.2 | Prigioniero con dado       | Stud with nut            |
| 900.6 | Prigioniero con dado       | Stud with nut            |
| 901.2 | Vite T.E.                  | Hex head screw           |
| 901.4 | Vite T.E.                  | Hex head screw           |
| 904.1 | Grano                      | Screw                    |
| 921   | Ghiera                     | Impeller nut             |
| 923   | Ghiera cuscinetto          | Bearing locking nut      |
| 932.3 | Anello di sicurezza albero | Shaft circlip            |
| 940.1 | Linguetta girante          | Impeller key             |
| 940.2 | Linguetta giunto           | Coupling key             |



| Dimensioni Flange / Flange Dimensions<br>(PN 25 EN 1092-2) |     |     |    |    |
|------------------------------------------------------------|-----|-----|----|----|
| DNa / DNm                                                  | CE  | CF  | zF | iF |
| 32                                                         | 140 | 100 | 4  | 18 |

| ACCOPPIAMENTO POTENZA - POLARITÀ / GRANDEZZA MOTORE<br>POWER - POLARITY / MOTOR SIZE COUPLING |        |      |      |     |      |      |      |
|-----------------------------------------------------------------------------------------------|--------|------|------|-----|------|------|------|
| 2POLI                                                                                         | GRAND. | 71   | 80   | 80  | 90S  | 90L  | 100L |
|                                                                                               | kW     | 0,55 | 0,75 | 1,1 | 1,5  | 2,2  | 3    |
| 4POLI                                                                                         | GRAND. | 80   | 80   | 90S | 90L  | 100L | 100L |
|                                                                                               | kW     | 0,55 | 0,75 | 1,1 | 1,5  | 2,2  | 3    |
| 6POLI                                                                                         | GRAND. | 80   | 90S  | 90L | 100L |      |      |
|                                                                                               | kW     | 0,55 | 0,75 | 1,1 | 1,5  |      |      |

| Taglia Size | Motore Elettrico IEC Motor | DIMENSIONI - DIMENSION [mm]<br>Pompa - Pumps |     |    |     |     |     |     |    |     |     |     |     |    |     |      | Peso <sup>(a)</sup><br>Weight |  |
|-------------|----------------------------|----------------------------------------------|-----|----|-----|-----|-----|-----|----|-----|-----|-----|-----|----|-----|------|-------------------------------|--|
|             |                            | DNa                                          | DNm | a  | a1  | f   | f1  | h1  | h2 | m1  | m2  | n1  | n2  | s  | w   | T(a) | Kg                            |  |
| 14          | 100                        | 32                                           | 32  | 30 | 128 | 261 | 316 | 205 | 84 | 250 | 175 | 247 | 227 | 10 | 176 | 736  | 49                            |  |
| 15          | 100                        | 32                                           | 32  | 30 | 128 | 261 | 316 | 205 | 84 | 250 | 175 | 247 | 227 | 10 | 176 | 736  | 58                            |  |
| 17          | 100                        | 32                                           | 32  | 30 | 128 | 261 | 316 | 205 | 84 | 250 | 175 | 247 | 227 | 10 | 176 | 736  | 70                            |  |

Quote e pesi suscettibili di variazione  
Dimensions and weights are subject to variations

<sup>(a)</sup> Quota indicativa può variare in funzione della marca del motore  
Not binding dimension that can change according to motor brand