



RB 300-46 6P 60Hz  
1190 [rpm]  
1 Stage

Curve N.  
T-0883

Max. diameter  
**459 [mm]**

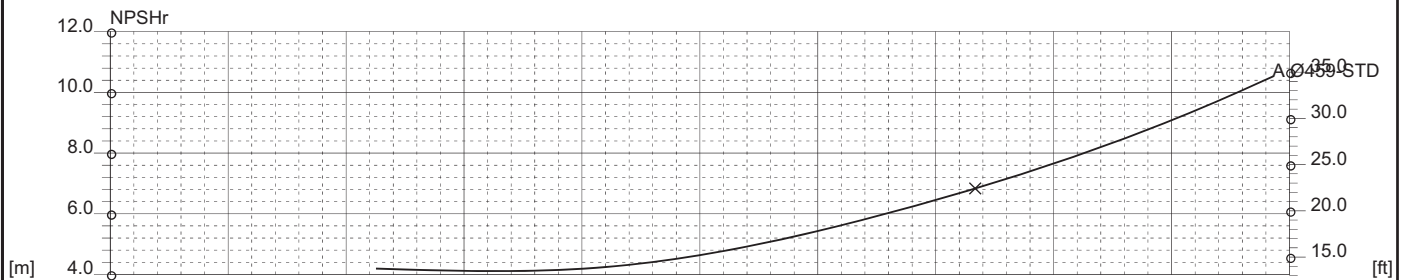
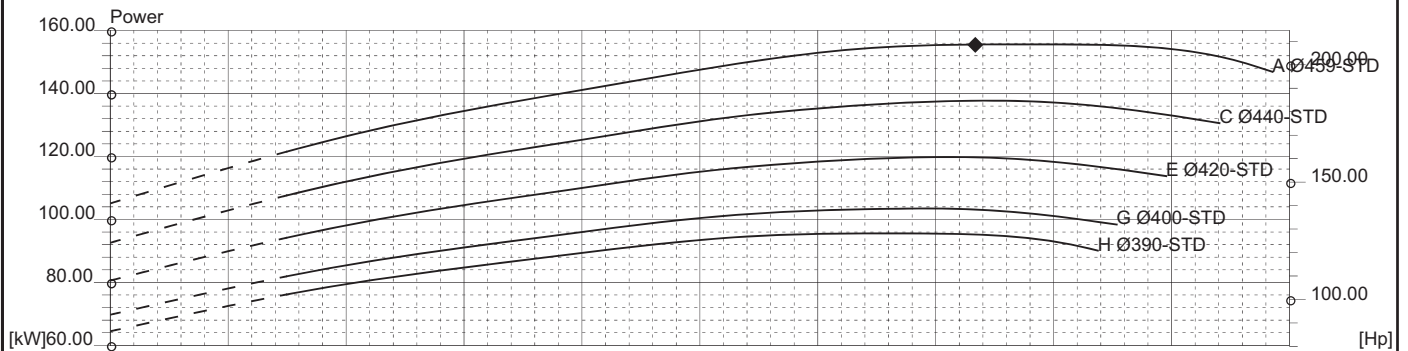
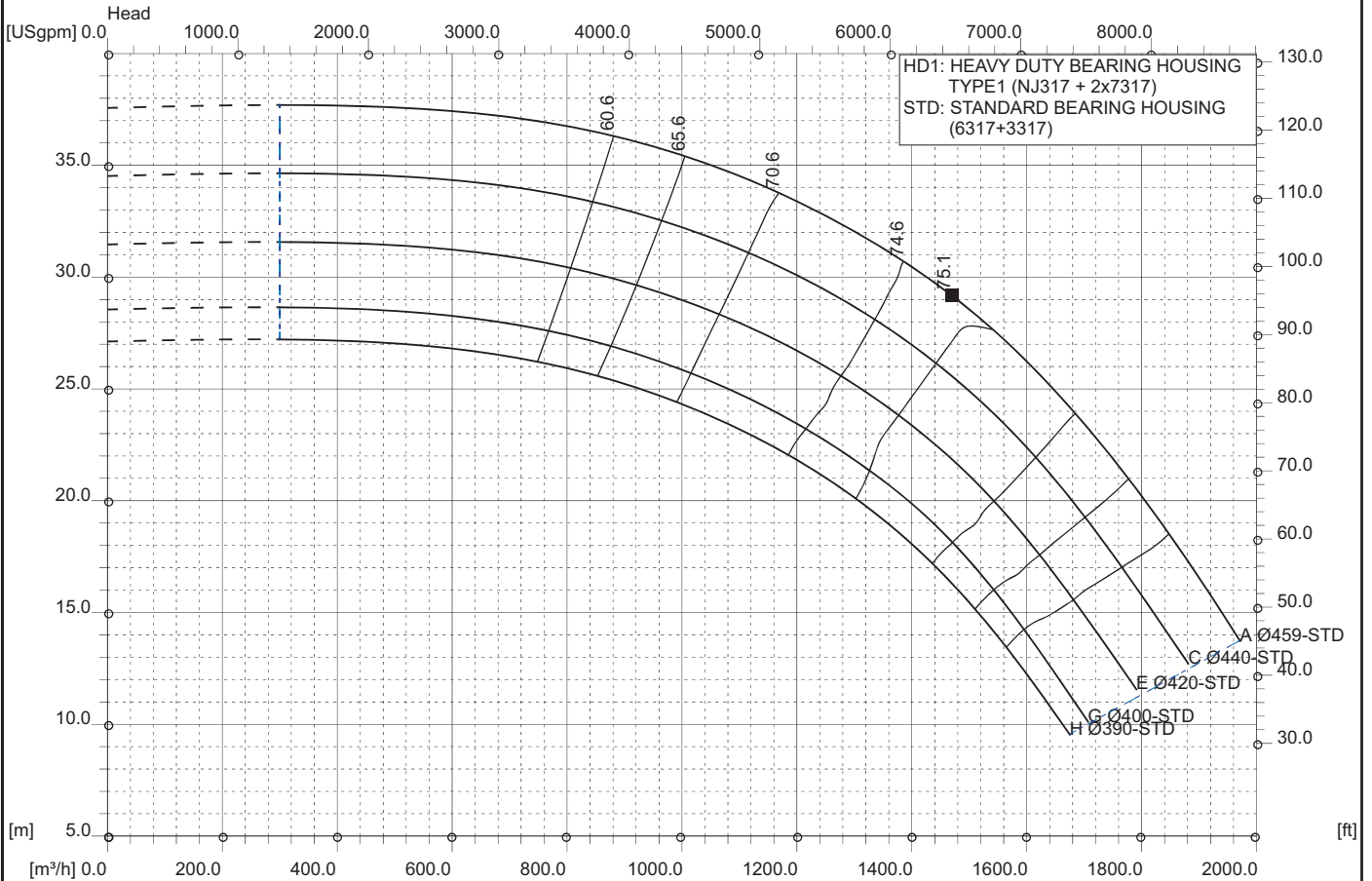
Min. diameter  
**390 [mm]**

Suction Ø  
**350 [mm]**

Discharge Ø  
**300 [mm]**

Density 1 and viscosity 1 cSt

Replace any previous edition



Comments

For pumps working with liquids having specific gravity higher than 1.15 and viscosity higher than 200 cSt, please contact the Technical Dept.

Diffuser	Impeller	NS 60	SSS 180	Author	Date Nov6,2017	Revision
----------	----------	----------	------------	--------	-------------------	----------