



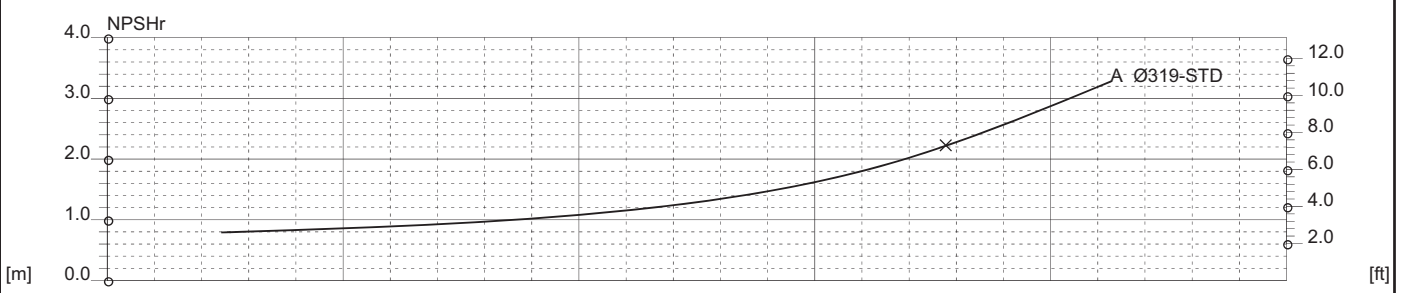
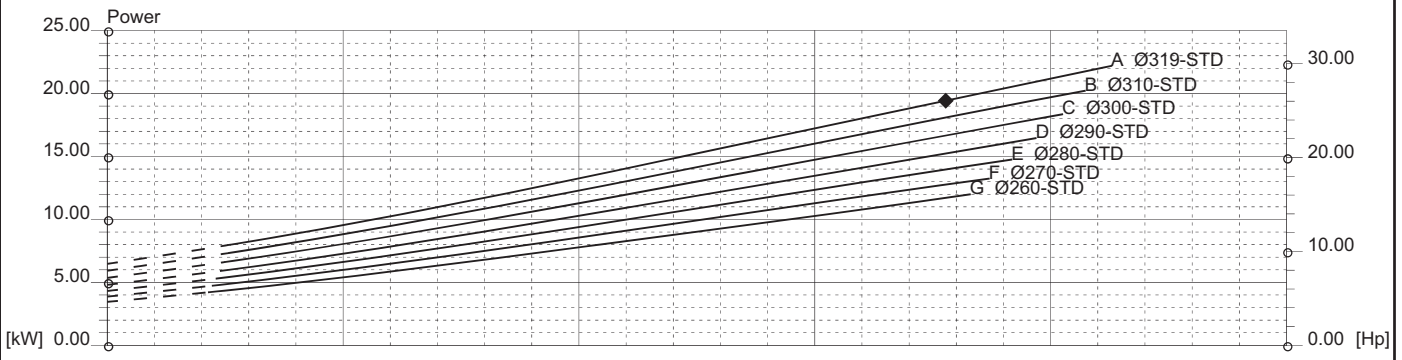
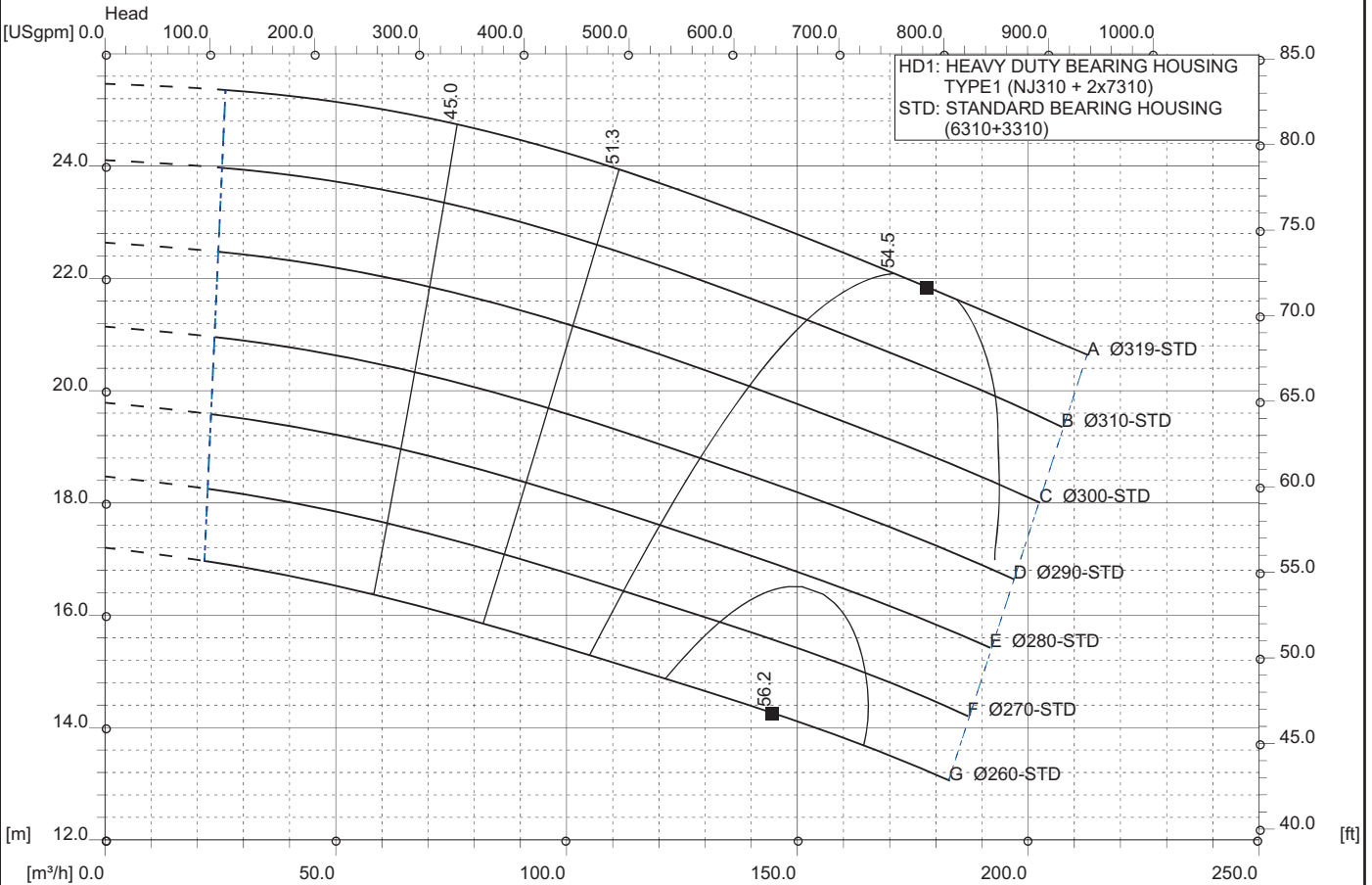
RC 80-31 6P 60Hz

1150 [rpm]
1Stage

Curve N.
T-0847

Max. diameter 319 [mm]	Min. diameter 260 [mm]	Suction Ø 100 [mm]	Discharge Ø 80 [mm]
----------------------------------	----------------------------------	------------------------------	-------------------------------

Density 1 and viscosity 1 cSt Replace any previous edition



Comments
For pumps working with liquids having specific gravity higher than 1.15 and viscosity higher than 200 cSt, please contact the Technical Dept.

Diffuser	Impeller	NS 25	SSS 144	Author	Date Nov8,2017	Revision
----------	----------	-----------------	-------------------	--------	--------------------------	----------