

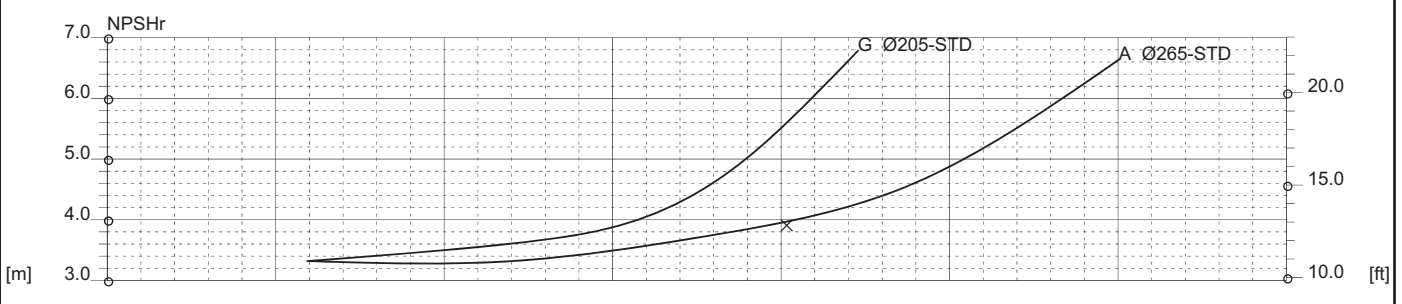
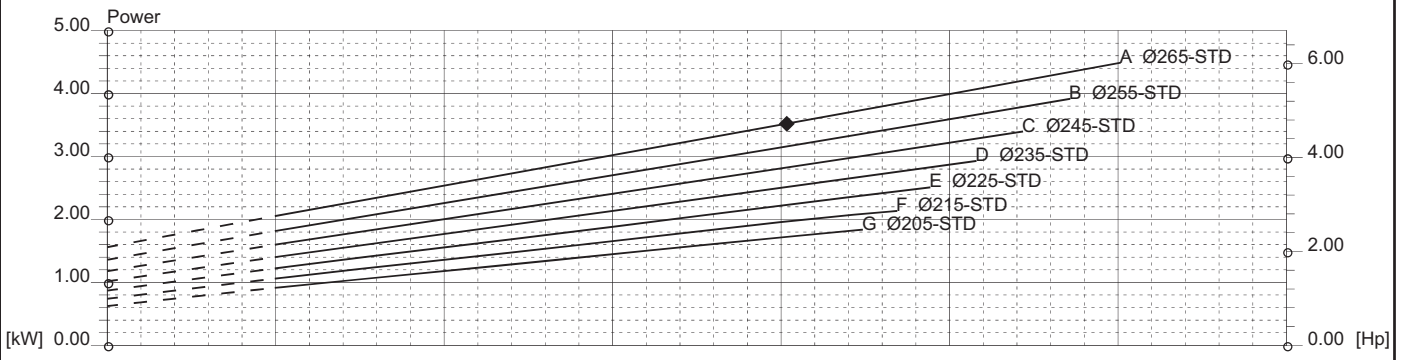
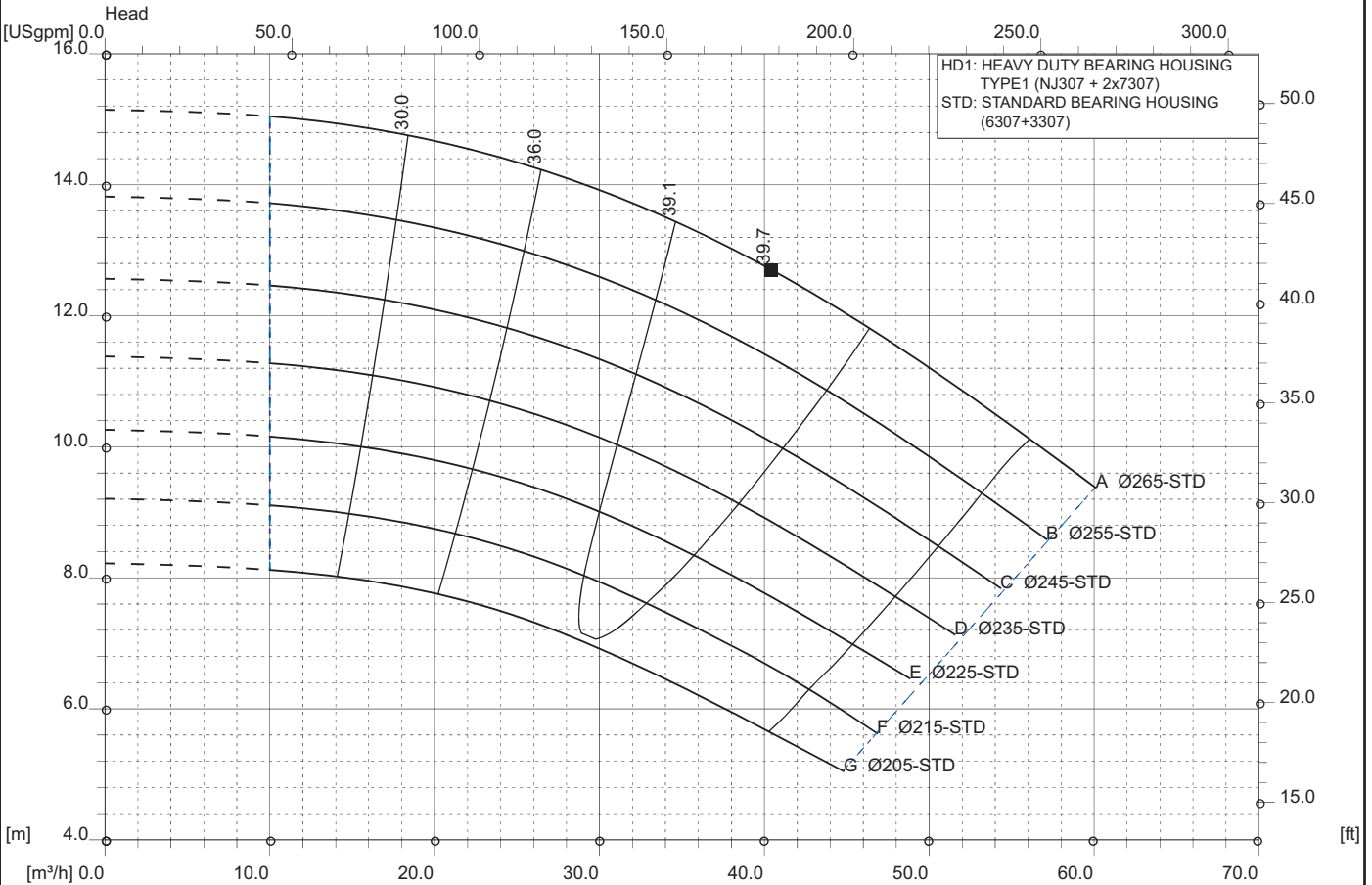


RC 50-25 6P 60HZ
 1165 [rpm]
 1 Stage

Curve N.
T-0851

Max. diameter 265 [mm]	Min. diameter 205 [mm]	Suction Ø 65 [mm]	Discharge Ø 50 [mm]
----------------------------------	----------------------------------	-----------------------------	-------------------------------

Density 1 and viscosity 1 cSt Replace any previous edition



Comments
For pumps working with liquids having specific gravity higher than 1.15 and viscosity higher than 200 cSt, please contact the Technical Dept.

Diffuser	Impeller	NS 18	SSS 44	Author	Date Nov8,2017	Revision
----------	----------	-----------------	------------------	--------	--------------------------	----------