

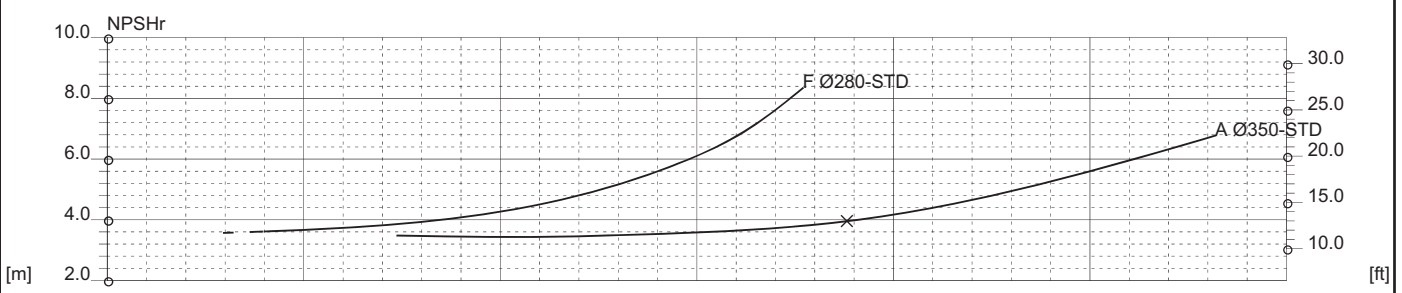
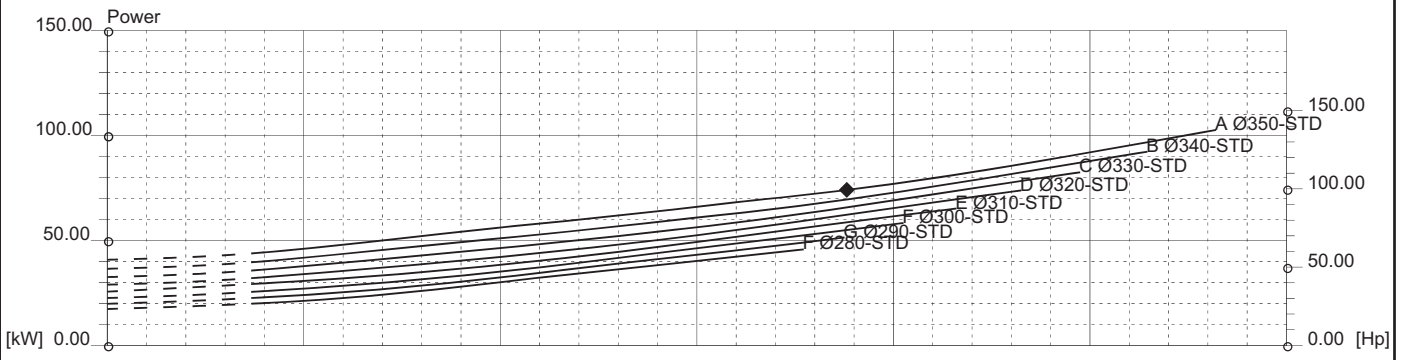
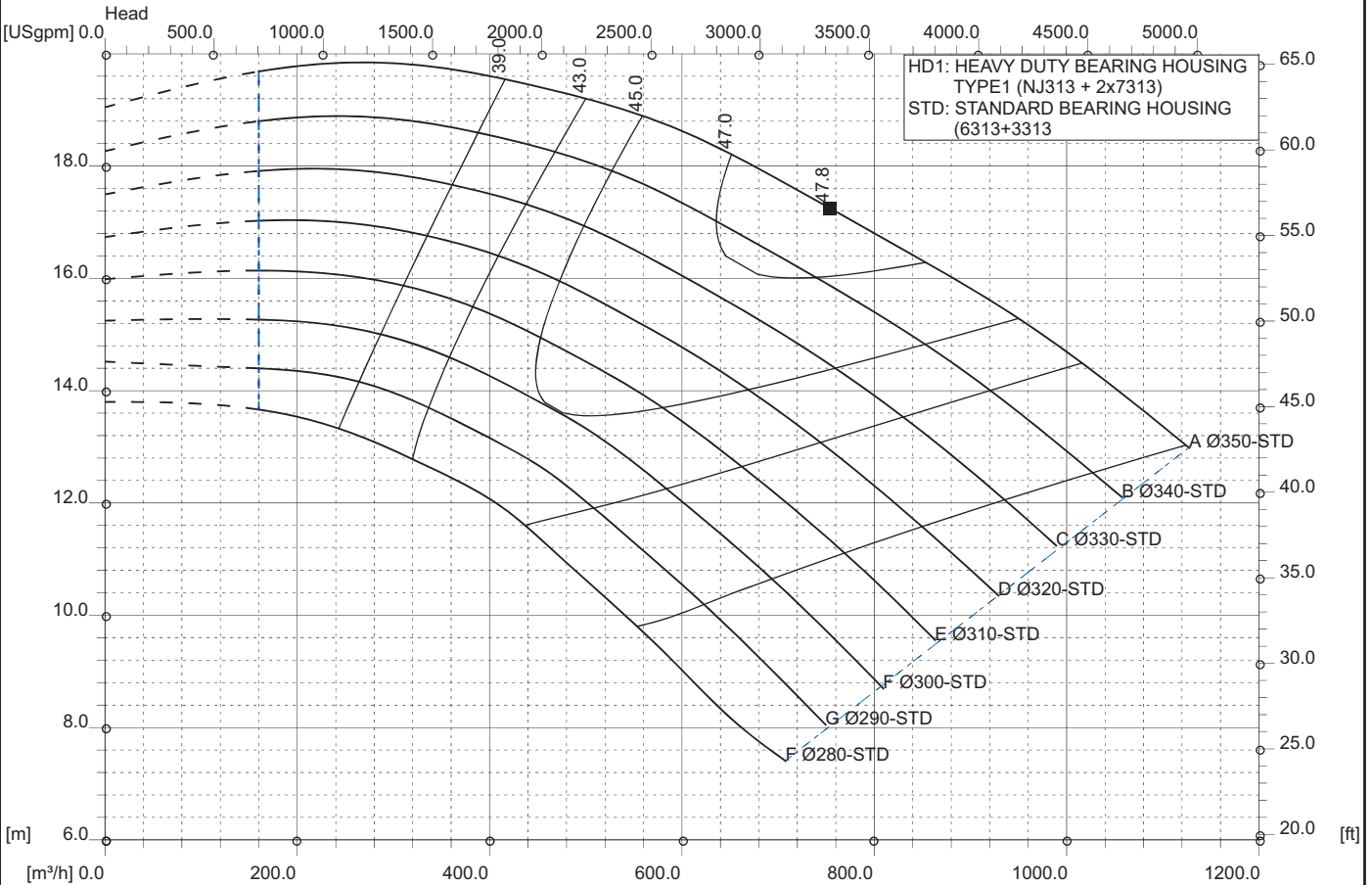


RC 250-35 6P 60Hz
 1175 [rpm]
 1 Stage

Curve N.
T-0852

Max. diameter 350 [mm]	Min. diameter 280 [mm]	Suction Ø 300 [mm]	Discharge Ø 250 [mm]
----------------------------------	----------------------------------	------------------------------	--------------------------------

Density 1 and viscosity 1 cSt Replace any previous edition



Comments
For pumps working with liquids having specific gravity higher than 1.15 and viscosity higher than 200 cSt, please contact the Technical Dept.

Diffuser	Impeller	NS 64	SSS 192	Author	Date Nov8,2017	Revision
----------	----------	-----------------	-------------------	--------	--------------------------	----------