



RC 150-35 6P 60Hz
 1175 [rpm]
 1 Stage

Curve N.
T-0854

Max. diameter
349 [mm]

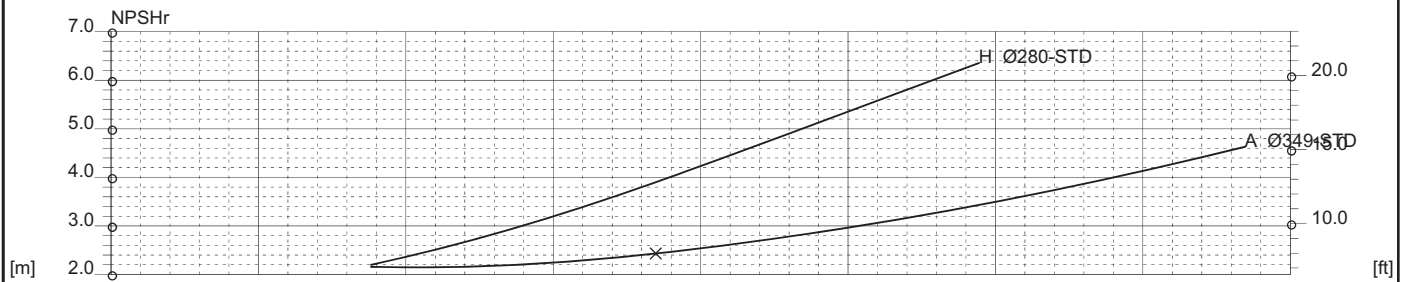
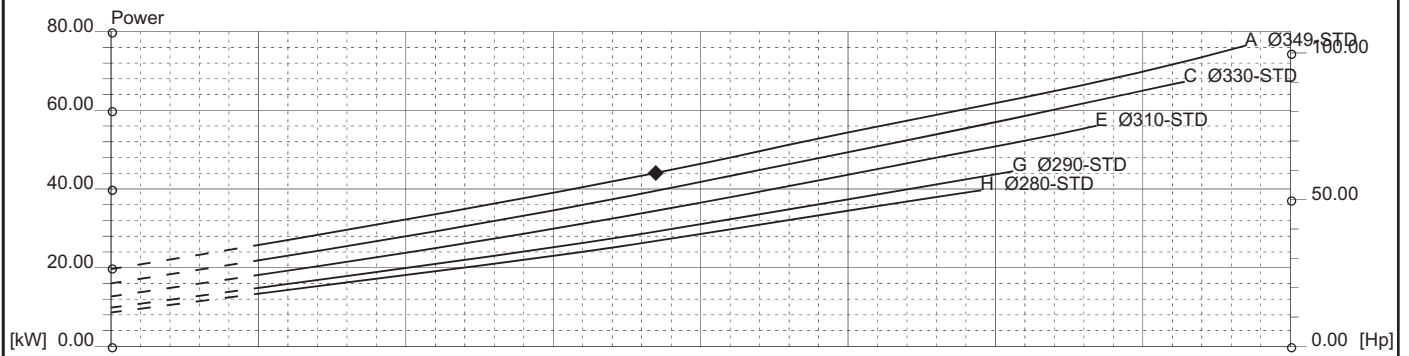
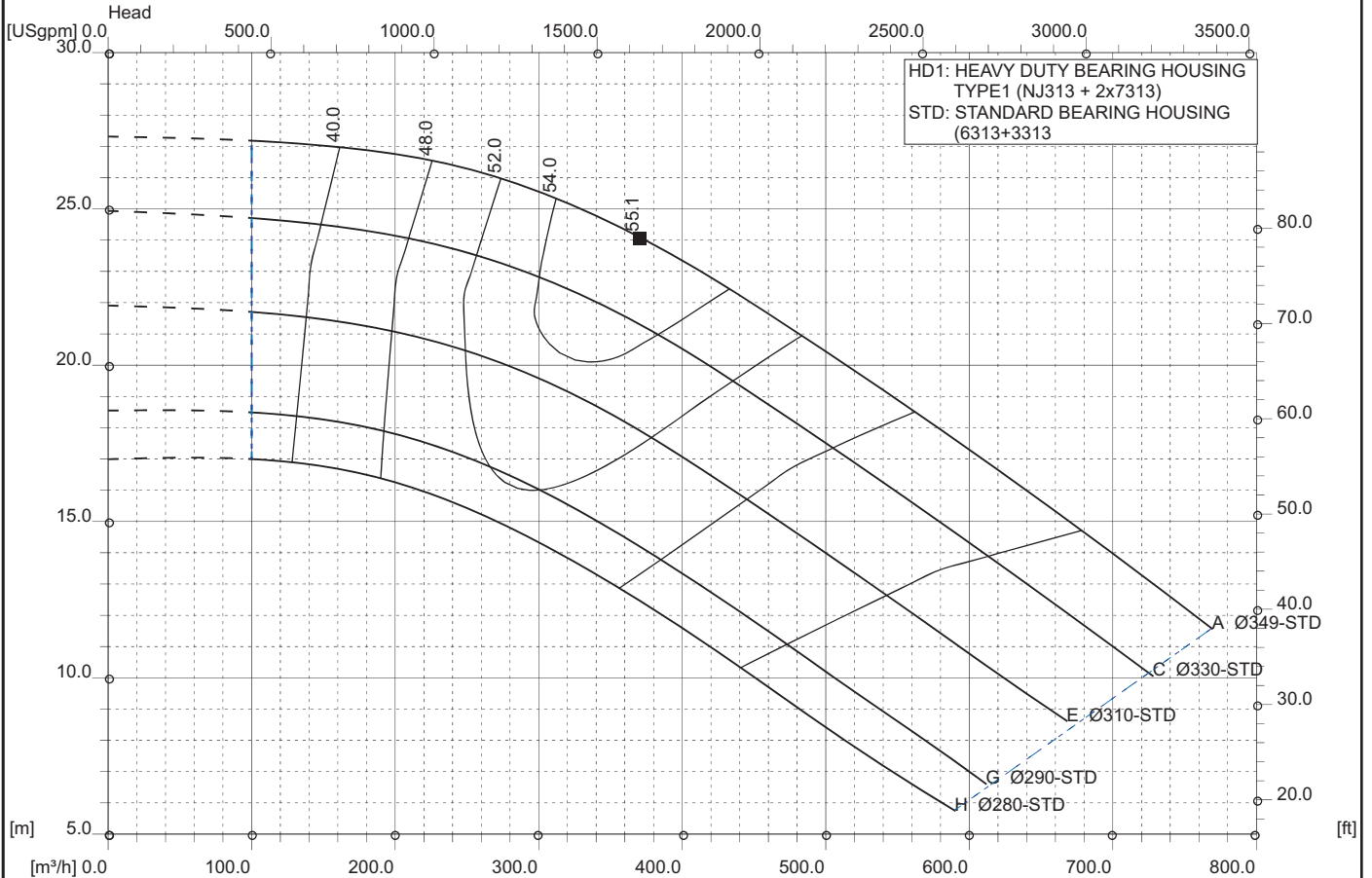
Min. diameter
280 [mm]

Suction Ø
200 [mm]

Discharge Ø
150 [mm]

Density 1 and viscosity 1 cSt

Replace any previous edition



Comments
For pumps working with liquids having specific gravity higher than 1.15 and viscosity higher than 200 cSt, please contact the Technical Dept.

Diffuser	Impeller	NS 35	SSS 194	Author	Date Nov21,2017	Revision
----------	----------	-----------------	-------------------	--------	---------------------------	----------