

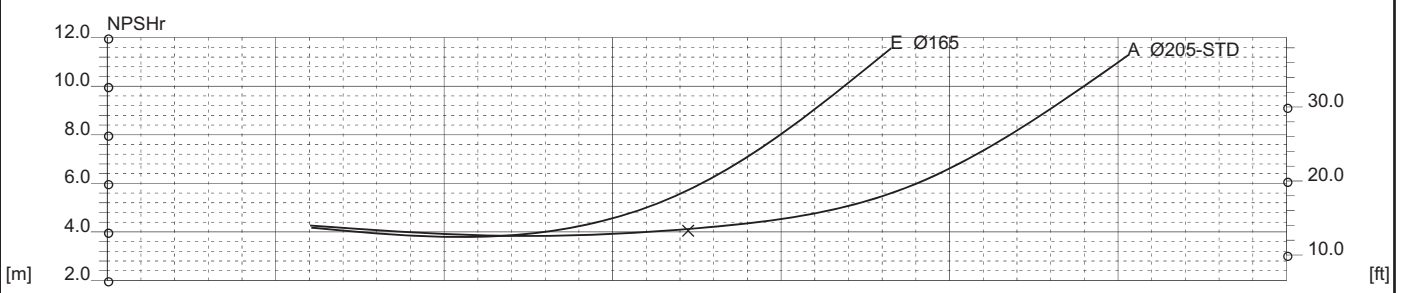
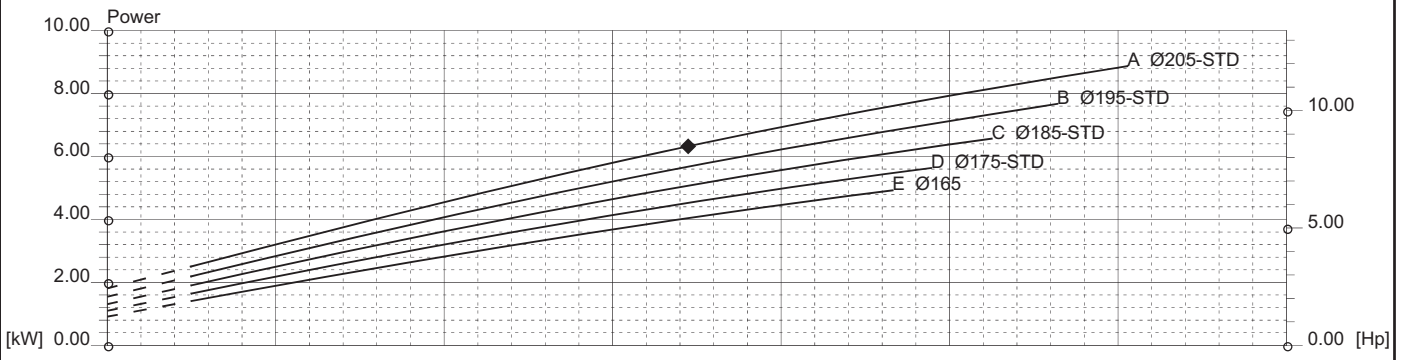
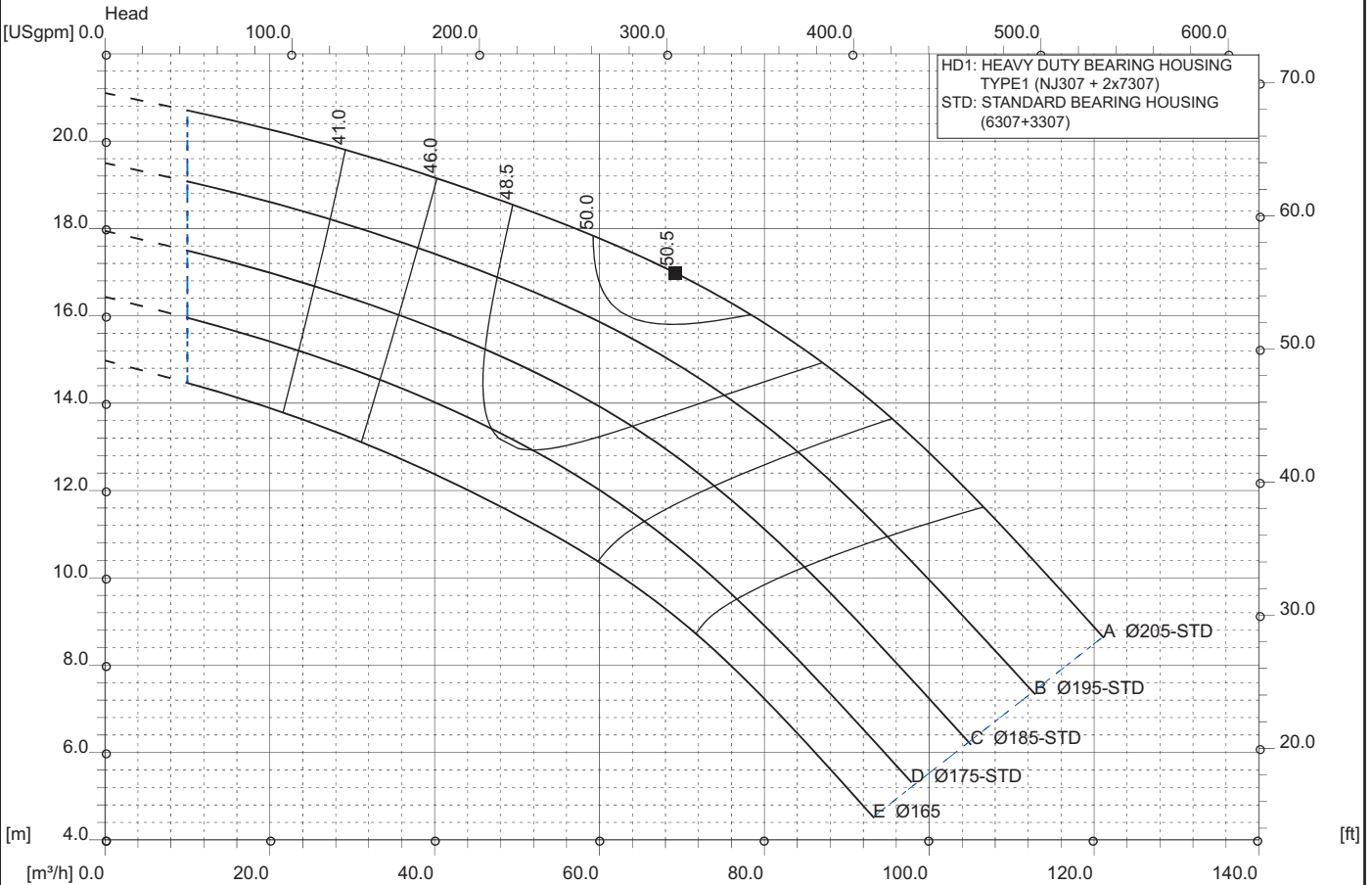


RC 65-20 4P 60Hz
 1740 [rpm]
 1Stage

Curve N.
T-0863

Max. diameter 205 [mm]	Min. diameter 165 [mm]	Suction Ø 80 [mm]	Discharge Ø 65 [mm]
----------------------------------	----------------------------------	-----------------------------	-------------------------------

Density 1 and viscosity 1 cSt Replace any previous edition



Comments
For pumps working with liquids having specific gravity higher than 1.15 and viscosity higher than 200 cSt, please contact the Technical Dept.

Diffuser	Impeller	NS 29	SSS 84	Author	Date Nov7,2017	Revision
----------	----------	-----------------	------------------	--------	--------------------------	----------