

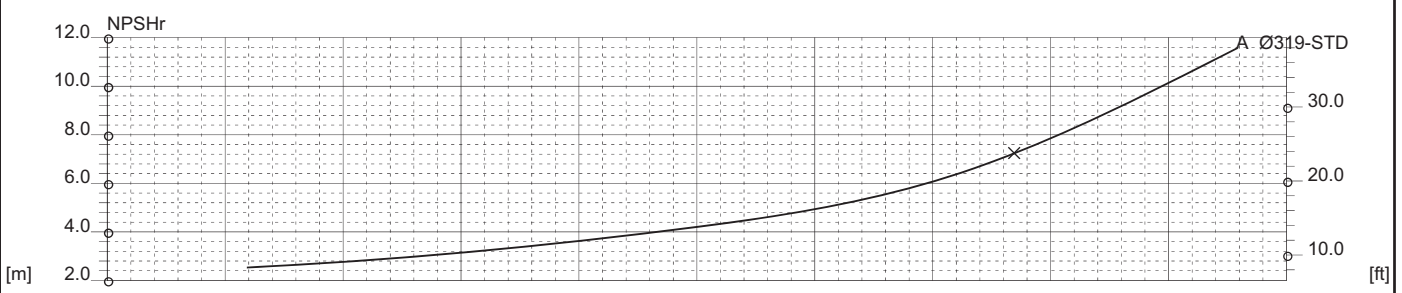
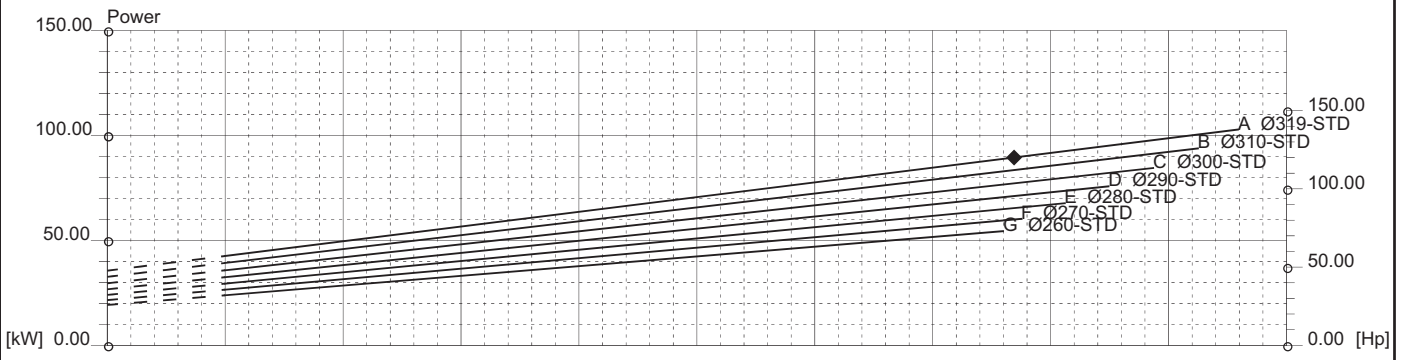
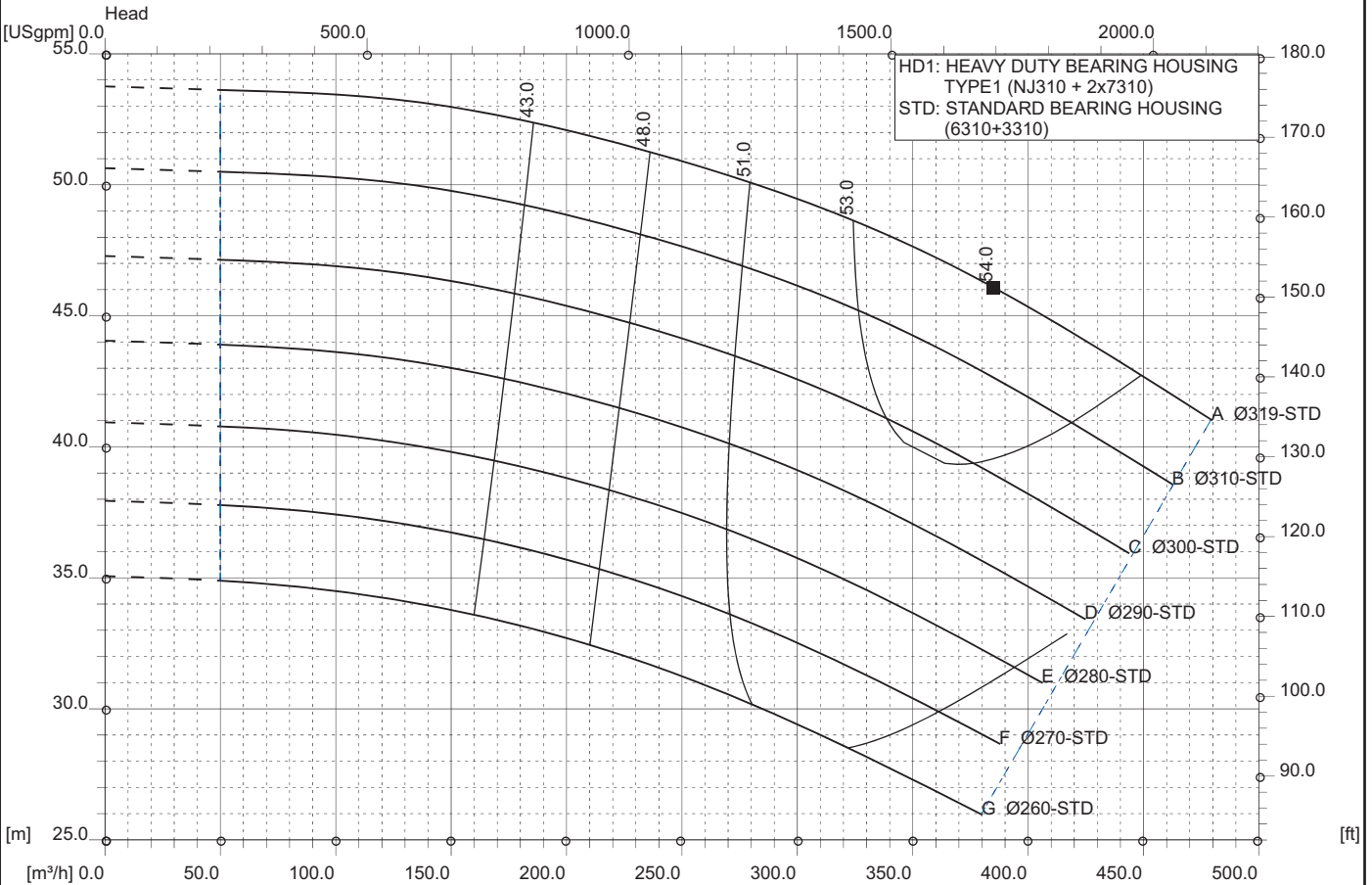


RC 125-31 4P 60Hz
 1765 [rpm]
 1 Stage

Curve N.
T-0873

Max. diameter 319 [mm]	Min. diameter 260 [mm]	Suction Ø 150 [mm]	Discharge Ø 125 [mm]
----------------------------------	----------------------------------	------------------------------	--------------------------------

Density 1 and viscosity 1 cSt Replace any previous edition



Comments
For pumps working with liquids having specific gravity higher than 1.15 and viscosity higher than 200 cSt, please contact the Technical Dept.

Diffuser	Impeller	NS 32	SSS 133	Author	Date Nov7,2017	Revision
----------	----------	-----------------	-------------------	--------	--------------------------	----------