



# RG 100-40 6P

N. curva

1150 [rpm]

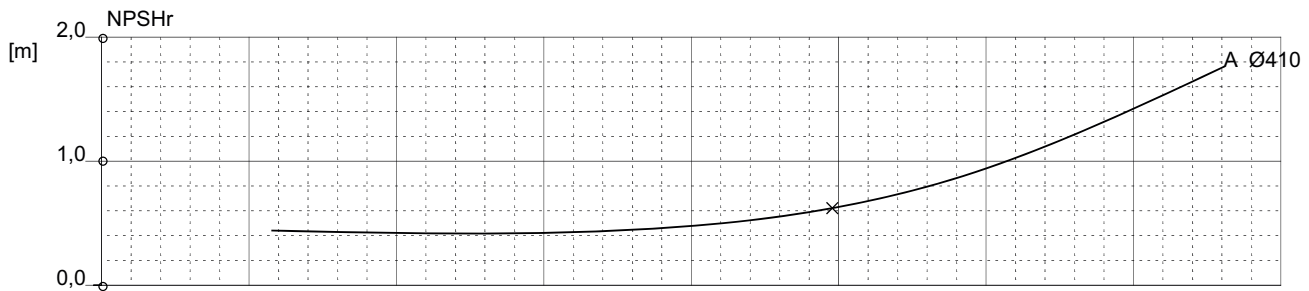
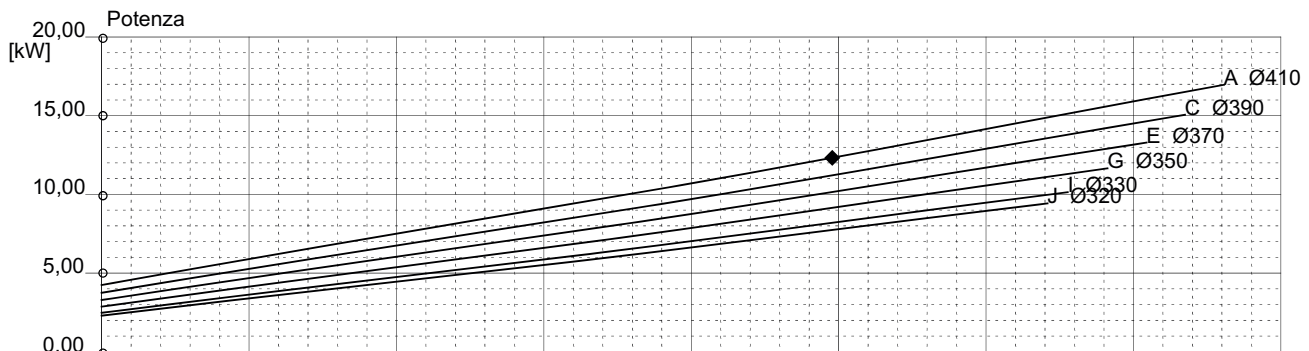
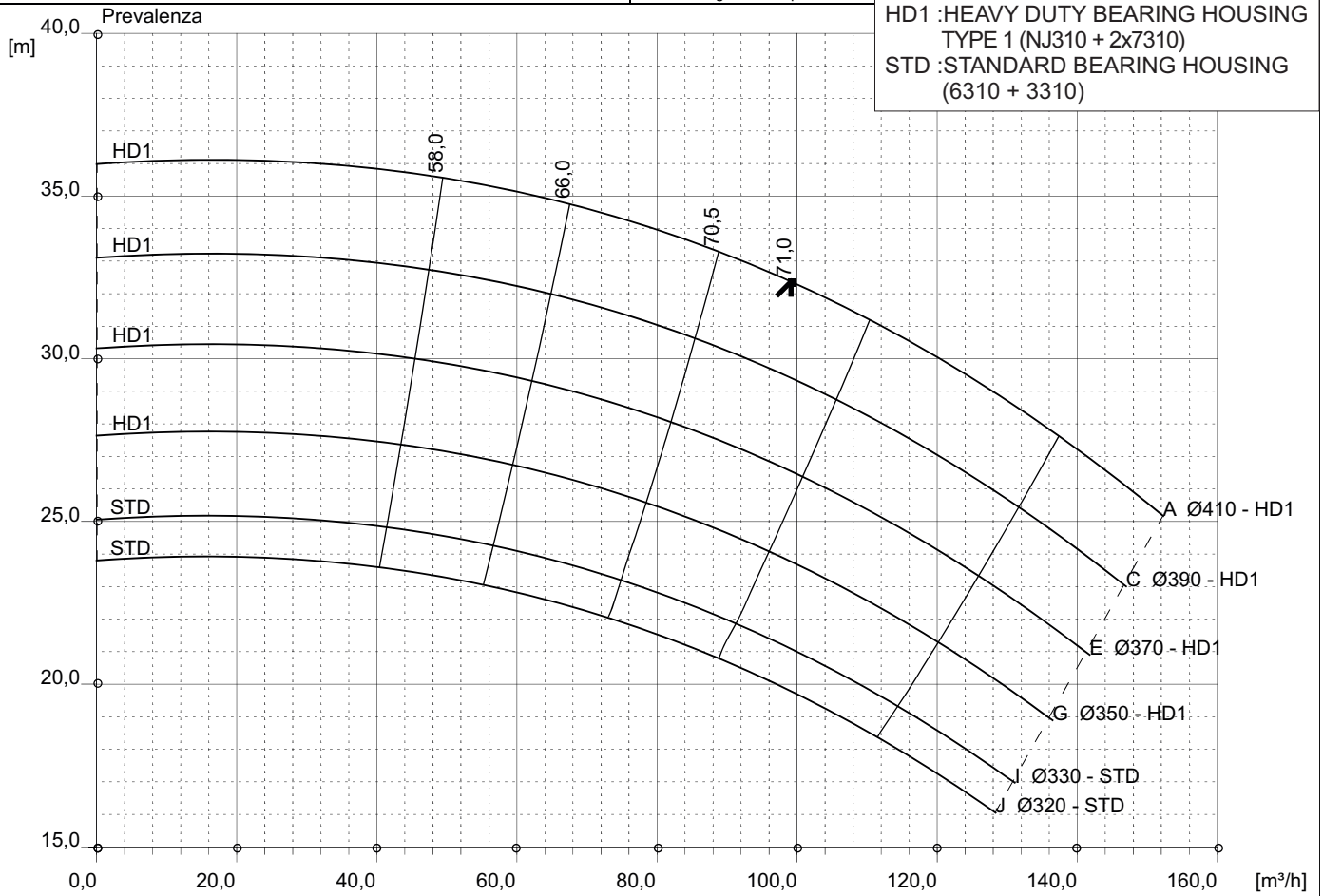
T-0918

1 Stadio

Diametro max <b>410 [mm]</b>	Diametro min <b>320 [mm]</b>	Velocità max <b>1999 [rpm]</b>	Ø aspirazione <b>125 [mm]</b>	Ø mandata <b>100 [mm]</b>
---------------------------------	---------------------------------	-----------------------------------	----------------------------------	------------------------------

Densità 1 e viscosità 1 cSt Sostituisce ogni edizione precedente

HD1 : HEAVY DUTY BEARING HOUSING  
TYPE 1 (NJ310 + 2x7310)  
STD : STANDARD BEARING HOUSING  
(6310 + 3310)



Commenti						
Diffusore	Modello	NS <b>14</b>	SSS <b>273</b>	Autore	Data <b>20-gen-2011</b>	Revisione