

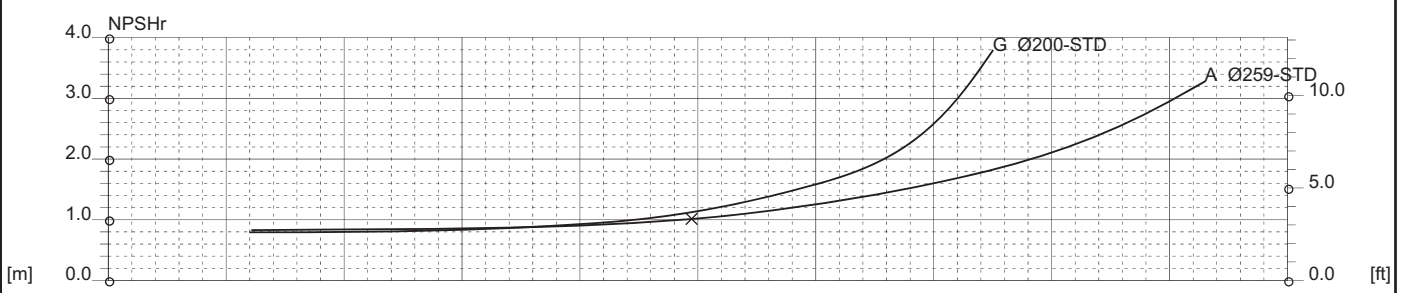
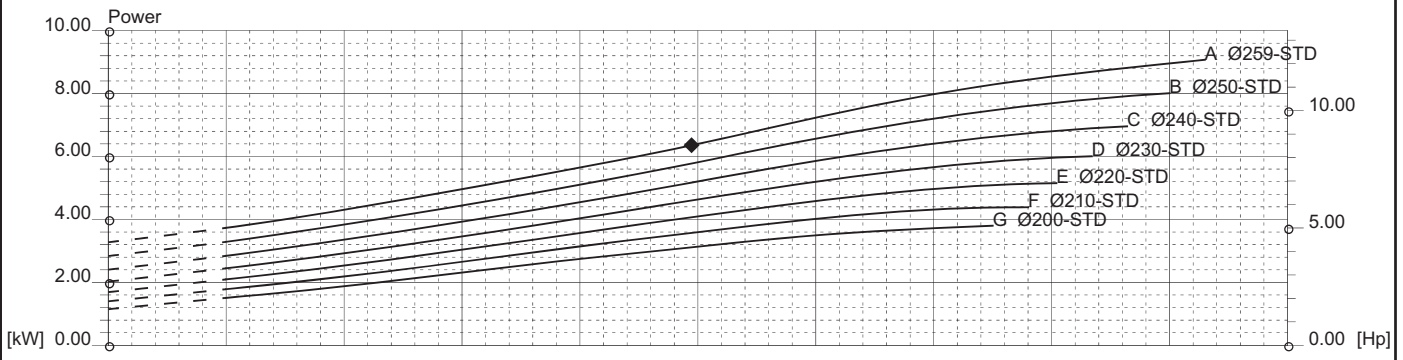
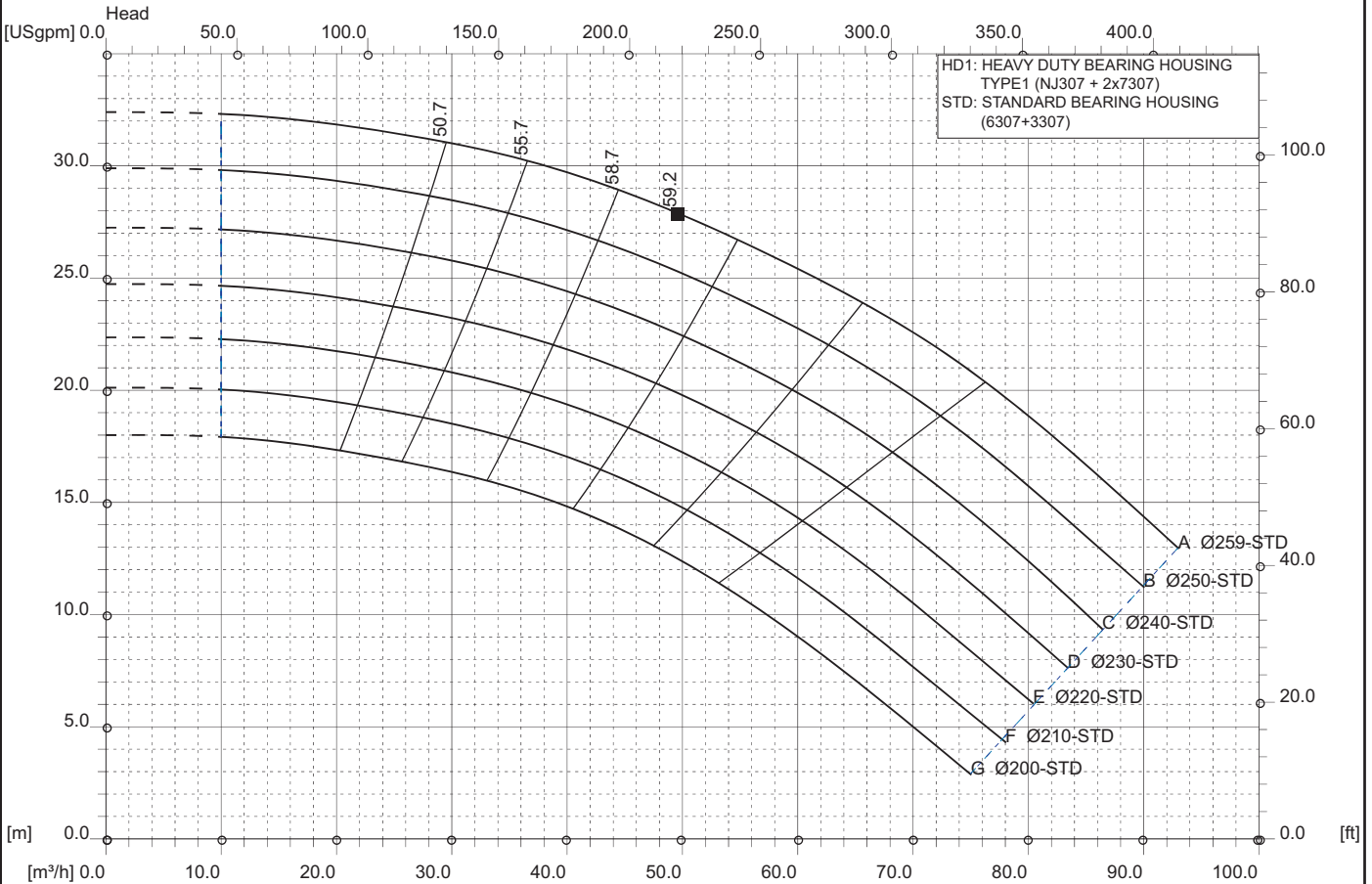


RG 65-25 4P 60Hz
 1740 [rpm]
 1Stage

Curve N.
T-0933

Max. diameter 259 [mm]	Min. diameter 200 [mm]	Suction Ø 100 [mm]	Discharge Ø 65 [mm]
----------------------------------	----------------------------------	------------------------------	-------------------------------

Density 1 and viscosity 1 cSt Replace any previous edition



Comments
For pumps working with liquids having specific gravity higher than 1.15 and viscosity higher than 200 cSt, please contact the Technical Dept.

Diffuser	Impeller	NS 17	SSS 202	Author	Date Nov 17, 2017	Revision
----------	----------	-----------------	-------------------	--------	-----------------------------	----------