

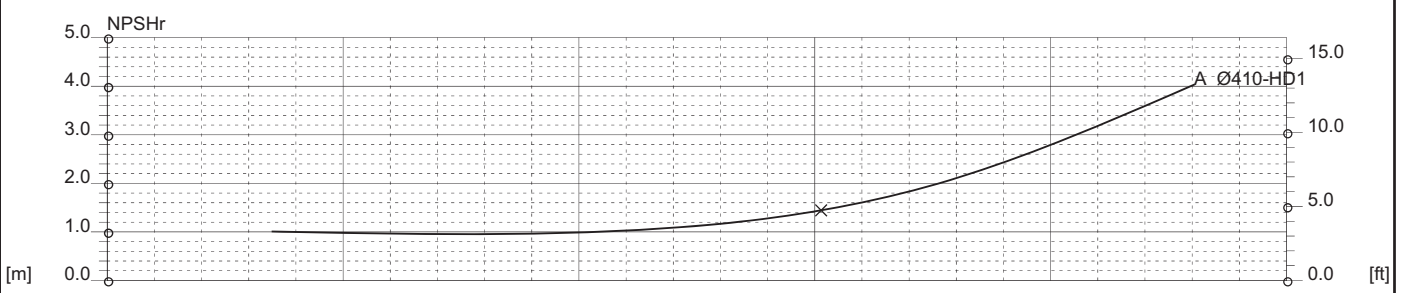
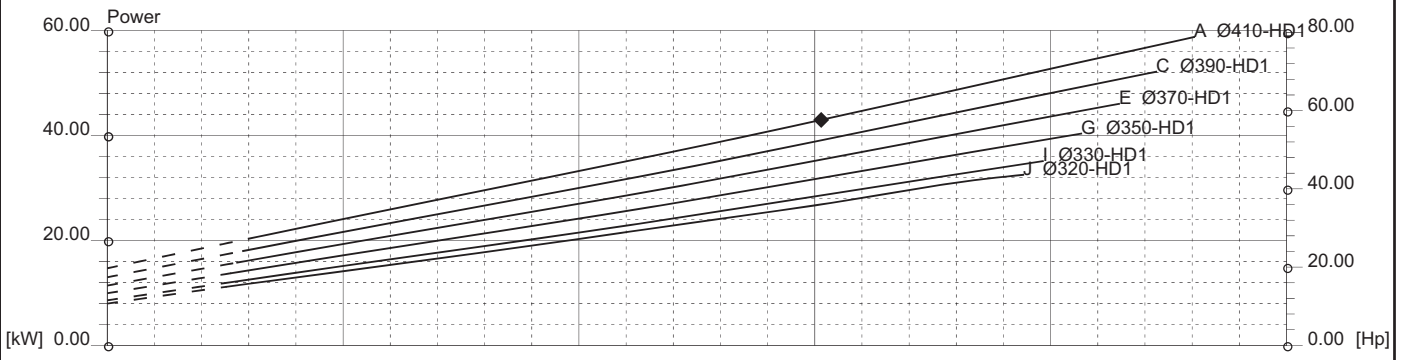
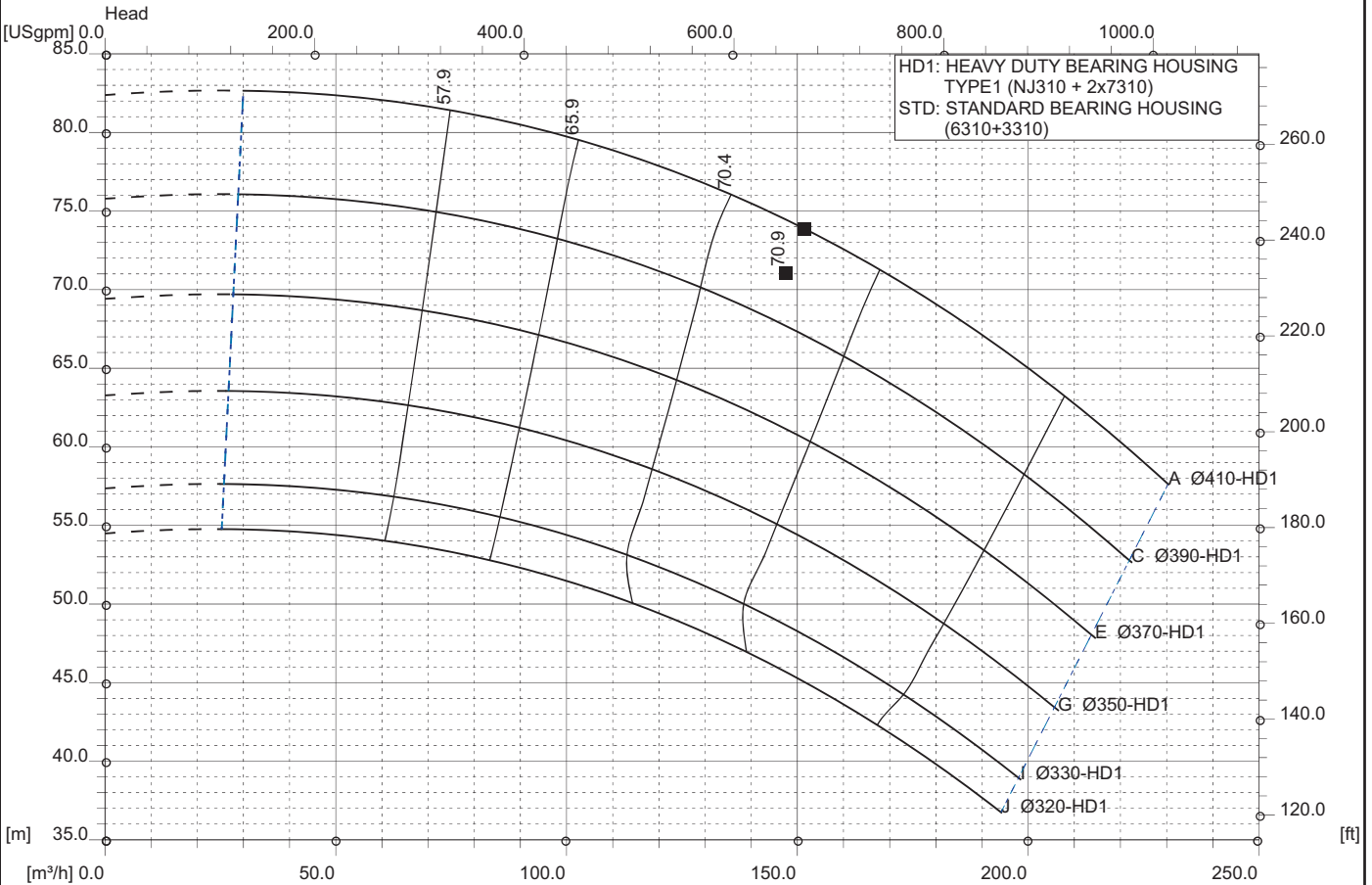


RG 100-40 4P 60Hz
 1740 [rpm]
 1 Stage

Curve N.
T-0971

Max. diameter 410 [mm]	Min. diameter 320 [mm]	Suction Ø 125 [mm]	Discharge Ø 100 [mm]
----------------------------------	----------------------------------	------------------------------	--------------------------------

Density 1 and viscosity 1 cSt Replace any previous edition



Comments
For pumps working with liquids having specific gravity higher than 1.15 and viscosity higher than 200 cSt, please contact the Technical Dept.

Diffuser	Impeller	NS 14	SSS 273	Author	Date Dec6,2017	Revision
----------	----------	-----------------	-------------------	--------	--------------------------	----------