

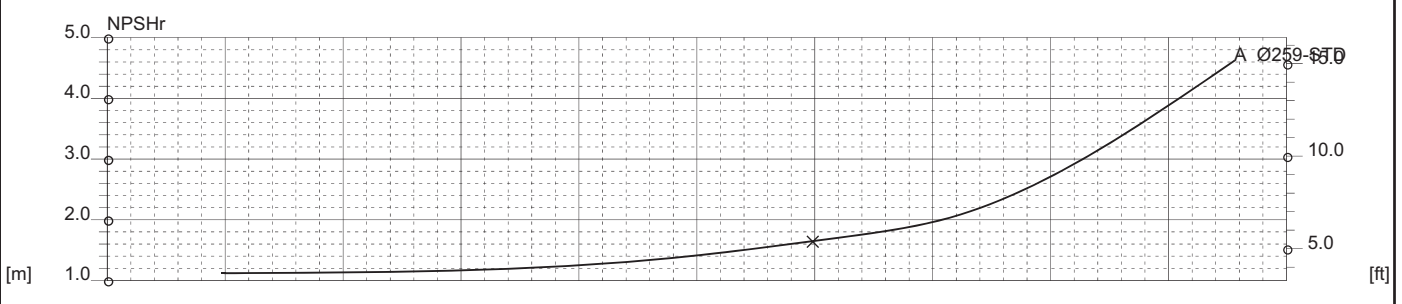
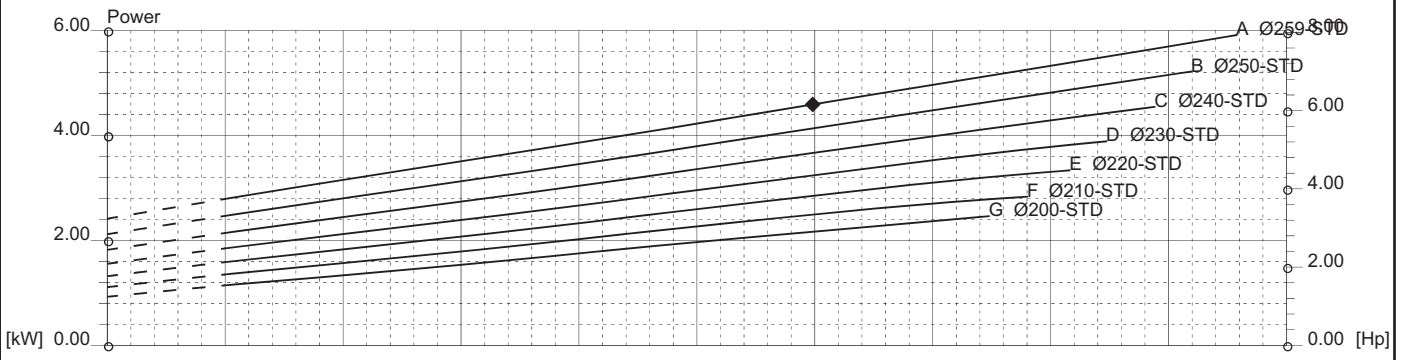
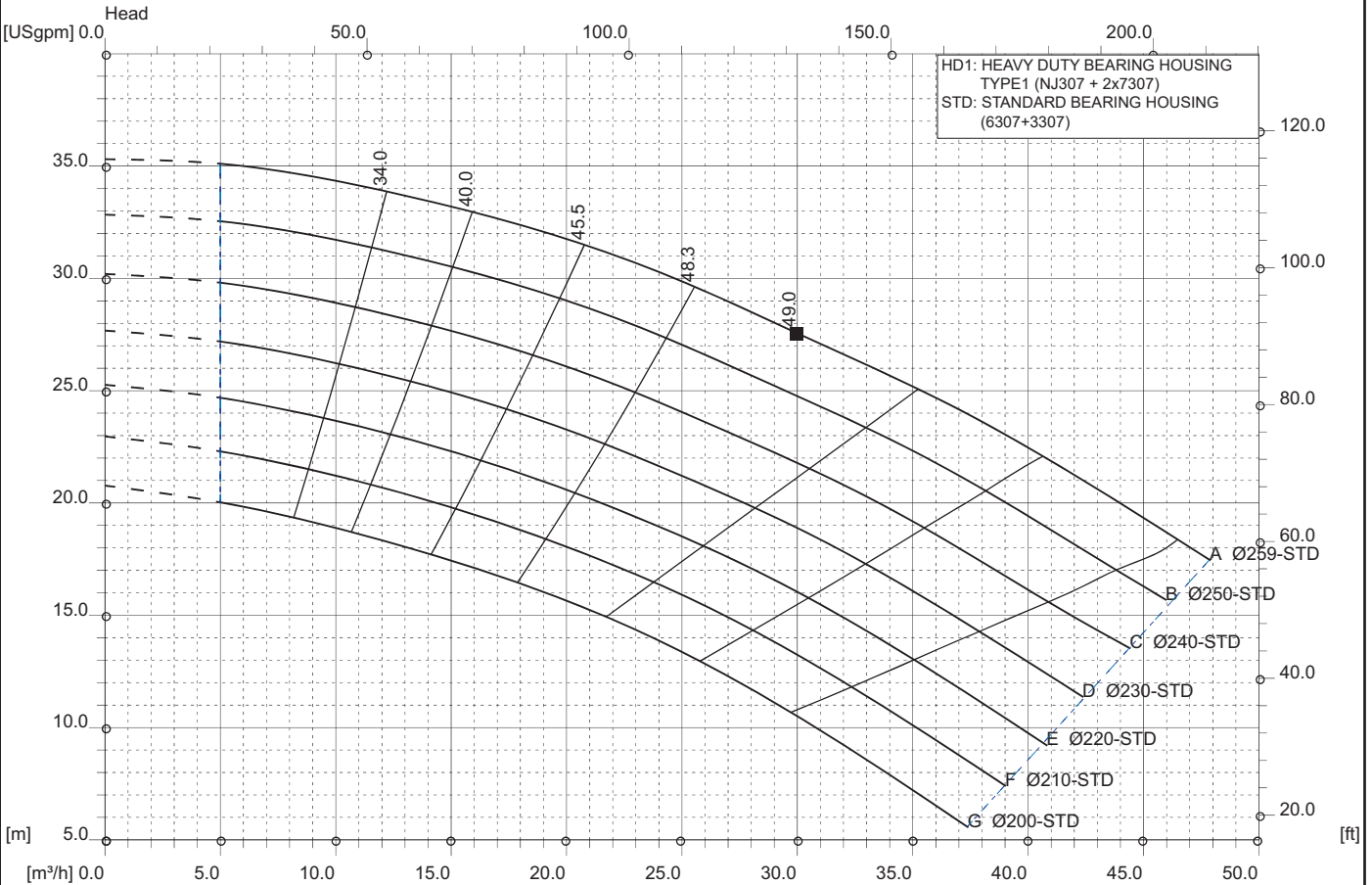


RD 50-26 4P 60Hz
 (ex RD50-25 since 01/01/19)
 1740 [rpm]
 1 Stage

Curve N.
T-0814

Max. diameter 259 [mm]	Min. diameter 200 [mm]	Suction Ø 80 [mm]	Discharge Ø 50 [mm]
----------------------------------	----------------------------------	-----------------------------	-------------------------------

Density 1 and viscosity 1 cSt Replace any previous edition



Comments
For pumps working with liquids having specific gravity higher than 1.15 and viscosity higher than 200 cSt, please contact the Technical Dept.

Diffuser	Impeller	NS 13	SSS 109	Author	Date Nov9,2017	Revision
----------	----------	-----------------	-------------------	--------	--------------------------	----------