



RD 100-20 4P 60Hz

1740 [rpm]
1 Stage

Curve N.
T-0827

Max. diameter
209 [mm]

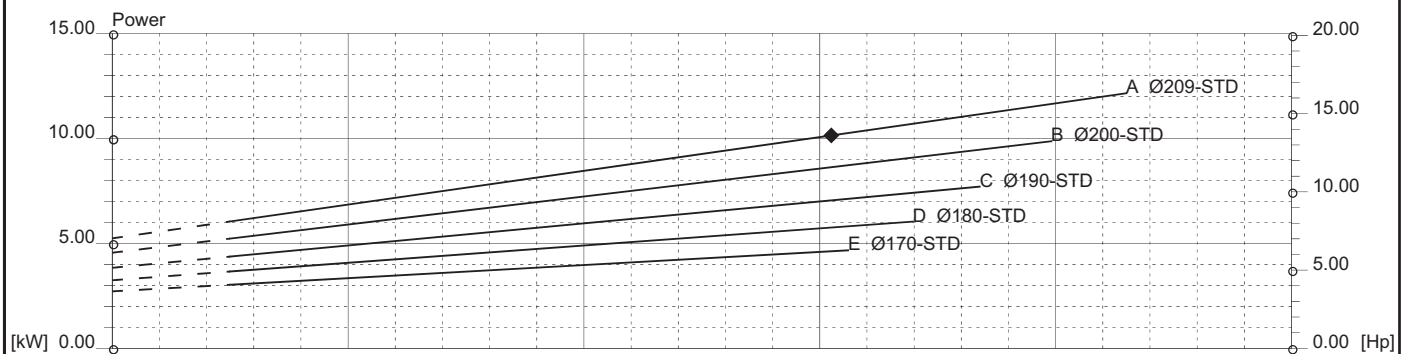
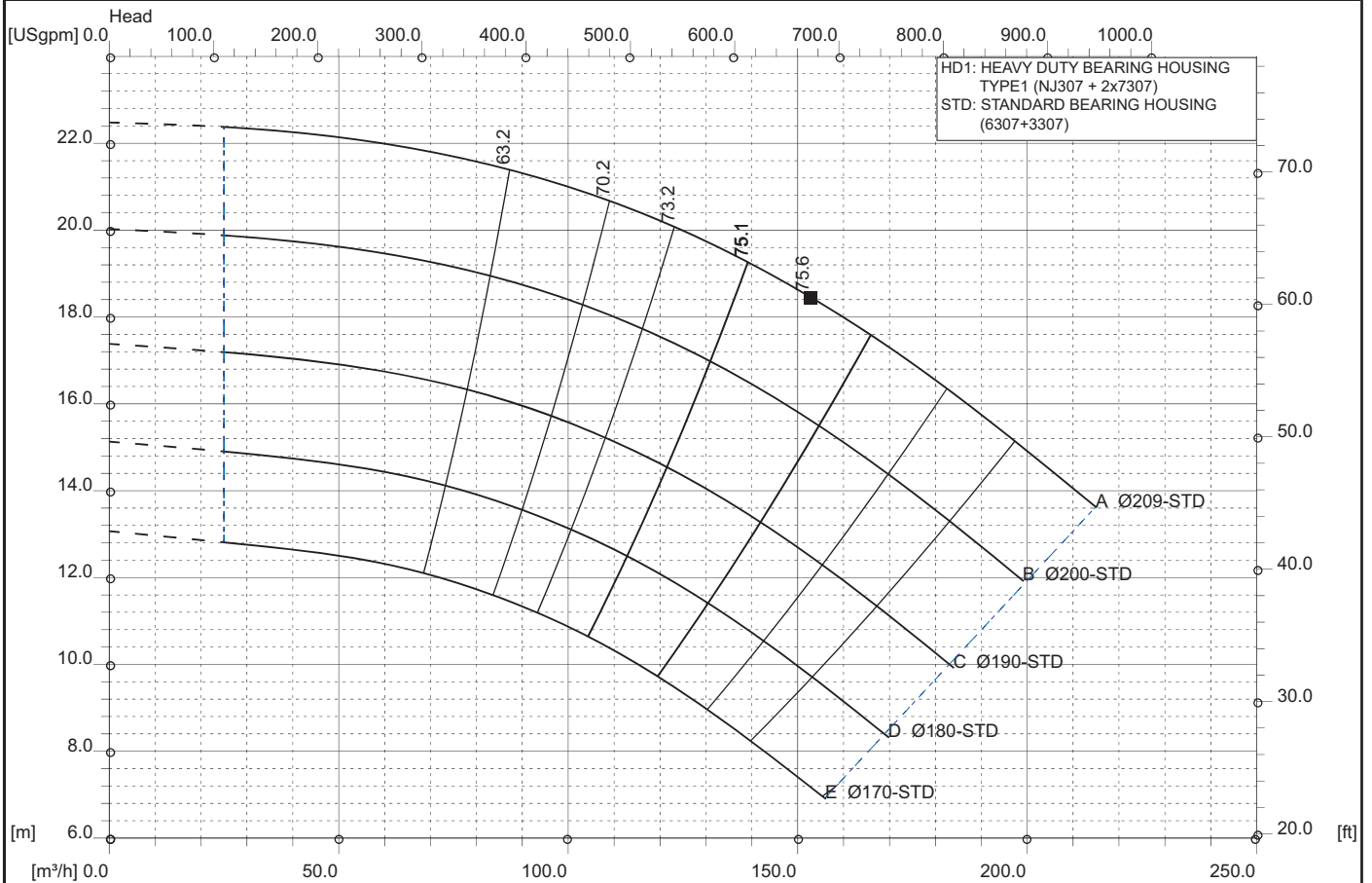
Min. diameter
170 [mm]

Suction Ø
125 [mm]

Discharge Ø
100 [mm]

Density 1 and viscosity 1 cSt

Replace any previous edition



Comments

For pumps working with liquids having specific gravity higher than 1.15 and viscosity higher than 200 cSt, please contact the Technical Dept.

Diffuser	Impeller	NS 40	SSS 230	Author	Date Nov9,2017	Revision
----------	----------	-----------------	-------------------	--------	--------------------------	----------