



RD 65-25 2P 60Hz  
3540 [rpm]  
1 Stage

Curve N.  
T-0833

Max. diameter  
259 [mm]

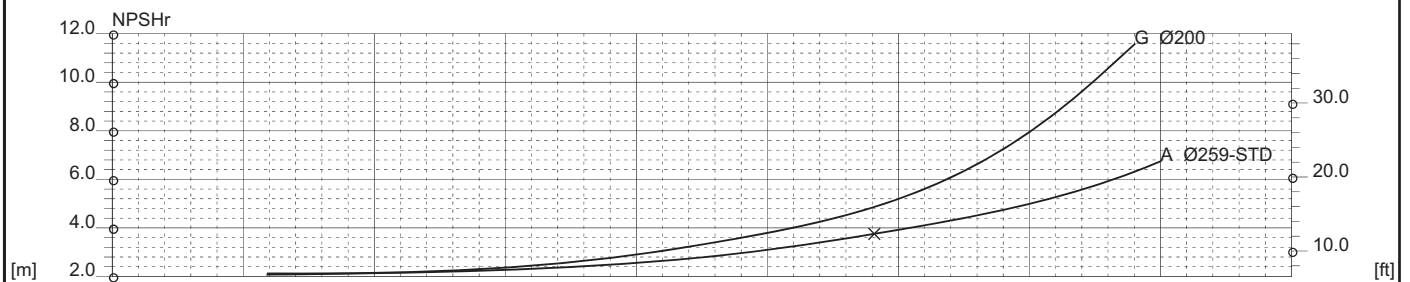
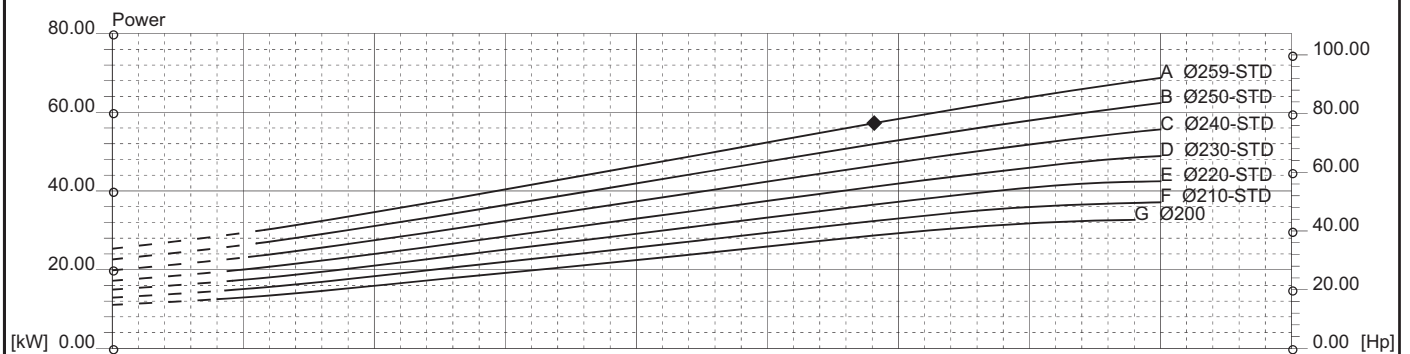
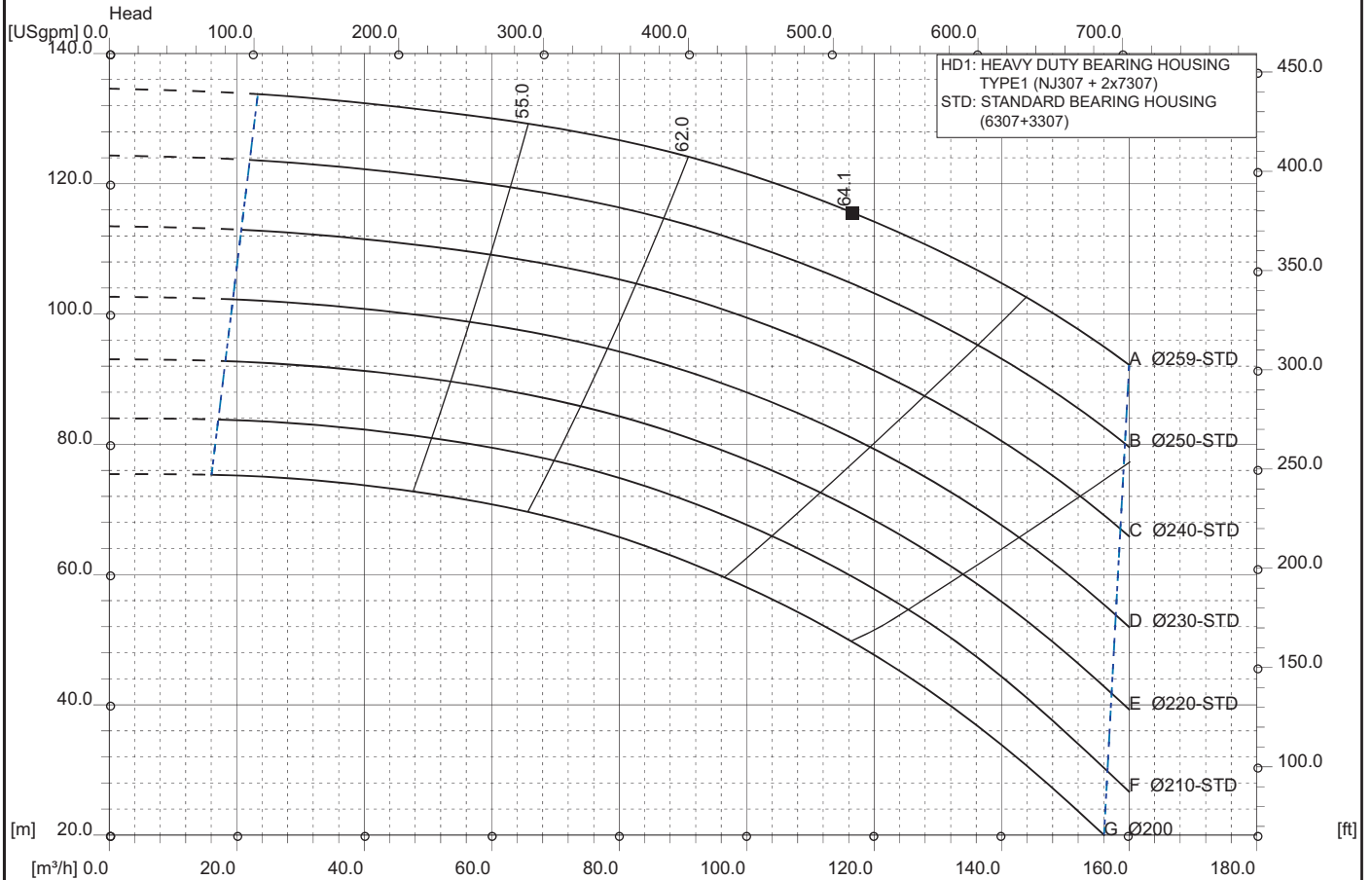
Min. diameter  
200 [mm]

Suction Ø  
100 [mm]

Discharge Ø  
65 [mm]

Density 1 and viscosity 1 cSt

Replace any previous edition



Comments

For pumps working with liquids having specific gravity higher than 1.15 and viscosity higher than 200 cSt, please contact the Technical Dept.

Diffuser	Impeller	NS 18	SSS 236	Author	Date Nov8,2017	Revision
----------	----------	----------	------------	--------	-------------------	----------