

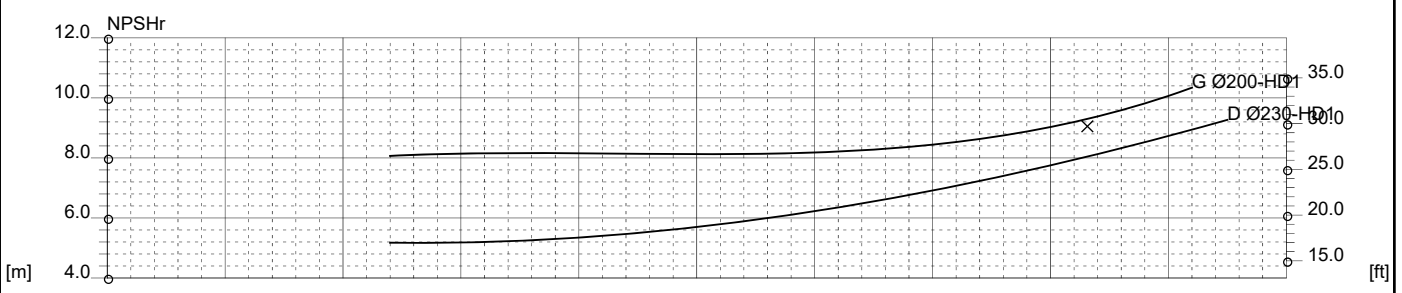
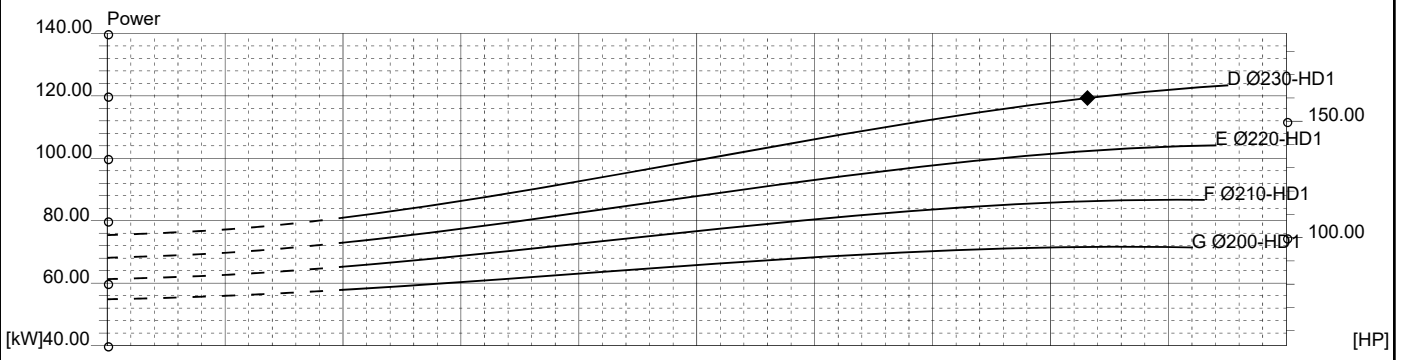
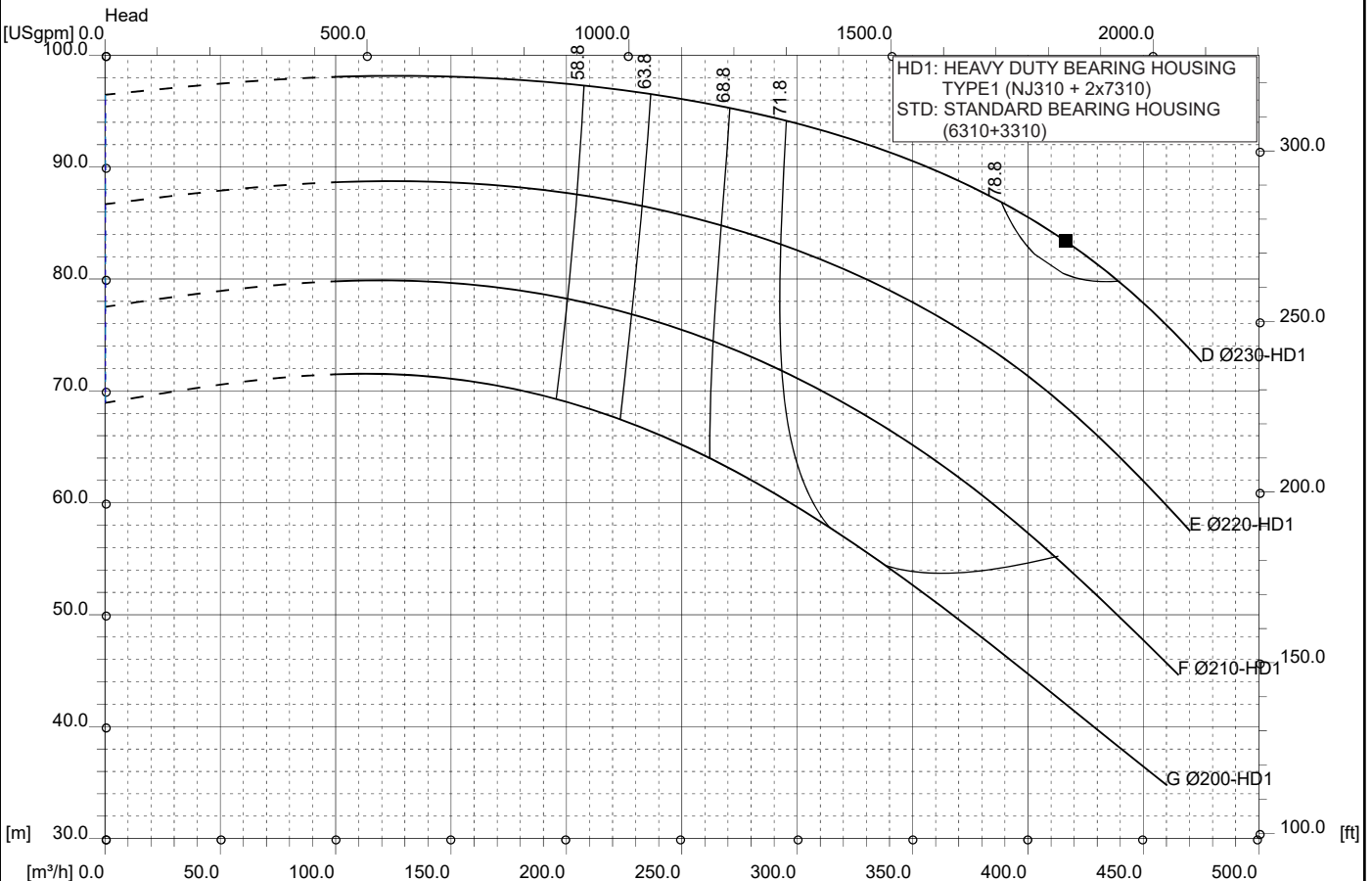


RD 125-25 2P
 3575 [rpm]
 1 Stage

Curve N.
T-1869

Max. diameter 259 [mm]	Min. diameter 200 [mm]	Suction Ø 150 [mm]	Discharge Ø 125 [mm]
----------------------------------	----------------------------------	------------------------------	--------------------------------

Density 1 and viscosity 1 cSt Replace any previous edition



Comments
For pumps working with liquids having specific gravity higher than 1.15 and viscosity higher than 200 cSt, please contact the Technical Dept.

Diffuser	Impeller	NS 36	SSS 242	Author	Date Apr 26, 2018	Revision
----------	----------	-----------------	-------------------	--------	-----------------------------	----------