

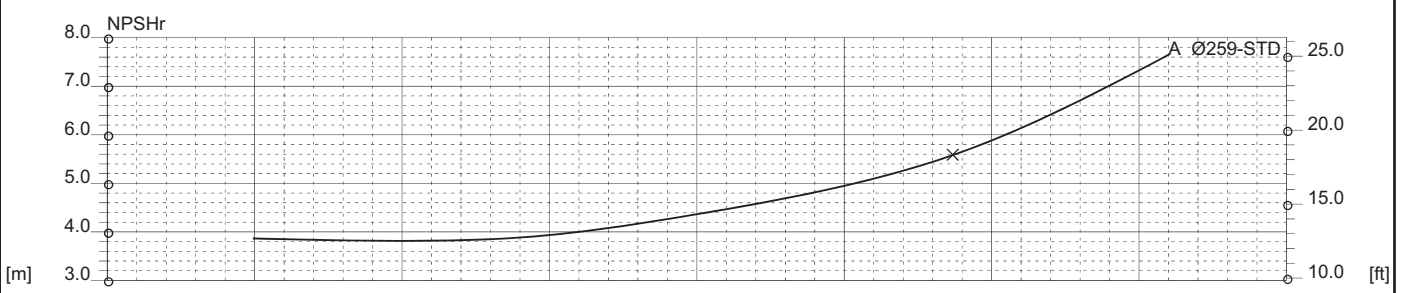
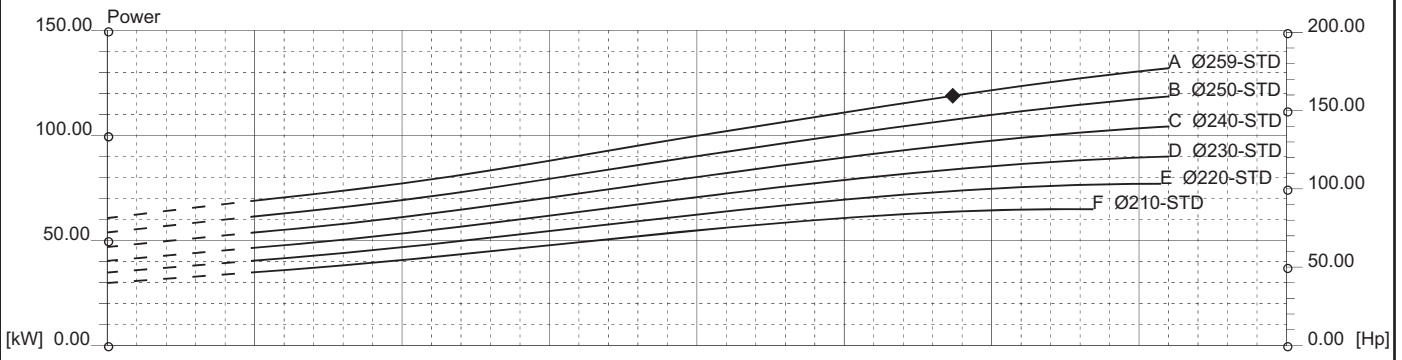
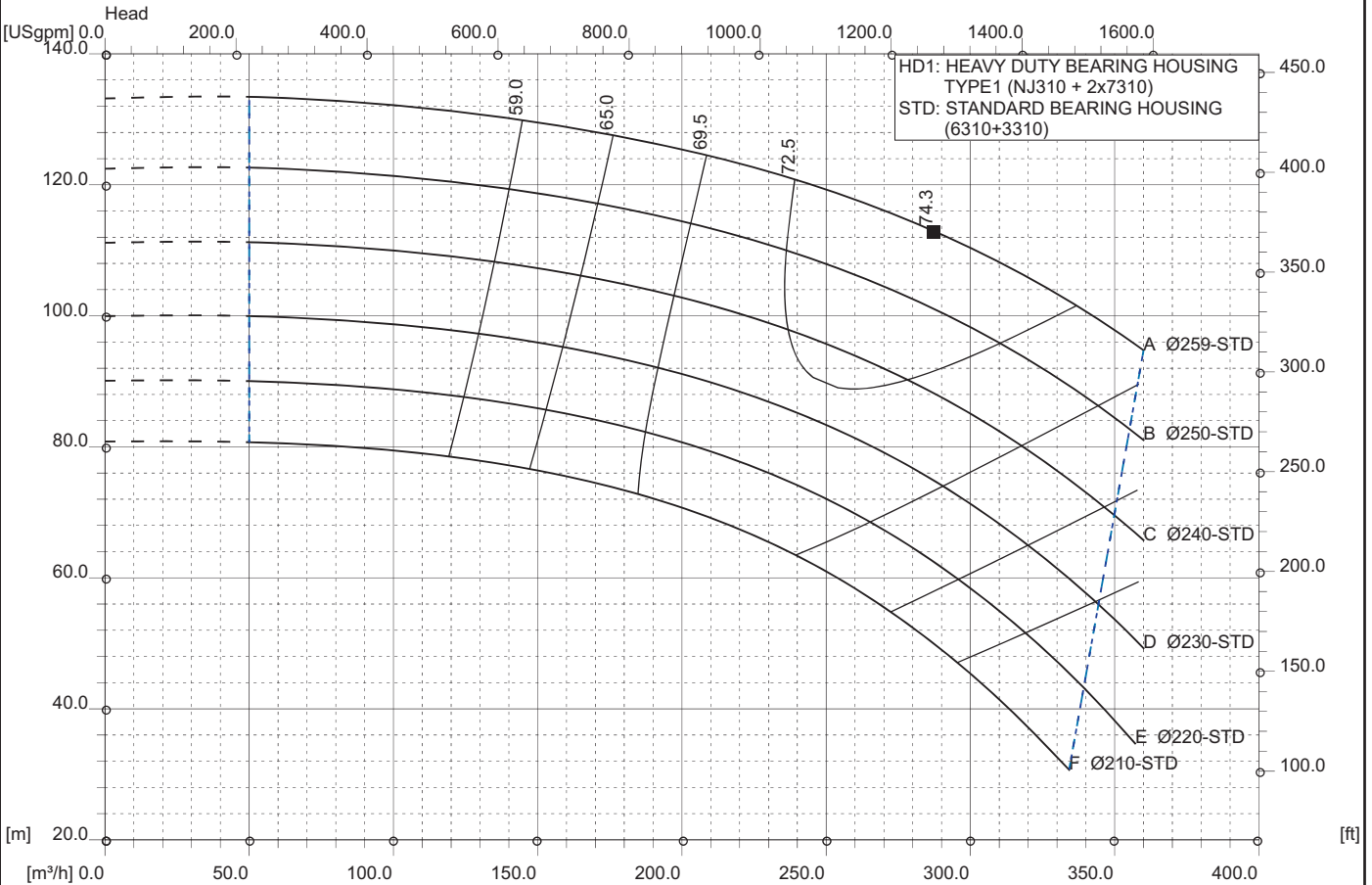


RD 100-25 2P 60Hz
 3540 [rpm]
 1 Stage

Curve N.
T-0845

Max. diameter 259 [mm]	Min. diameter 200 [mm]	Suction Ø 125 [mm]	Discharge Ø 100 [mm]
----------------------------------	----------------------------------	------------------------------	--------------------------------

Density 1 and viscosity 1 cSt Replace any previous edition



Comments
For pumps working with liquids having specific gravity higher than 1.15 and viscosity higher than 200 cSt, please contact the Technical Dept.

Diffuser	Impeller	NS 29	SSS 275	Author	Date Nov8,2017	Revision
----------	----------	-----------------	-------------------	--------	--------------------------	----------