

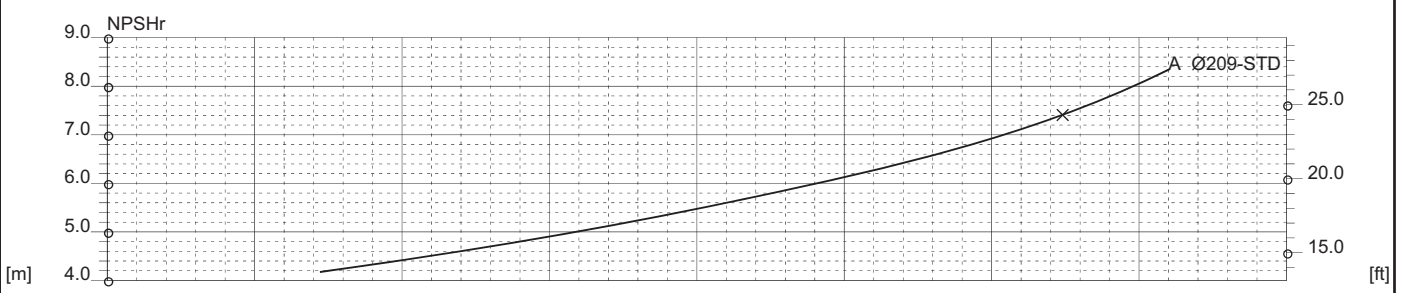
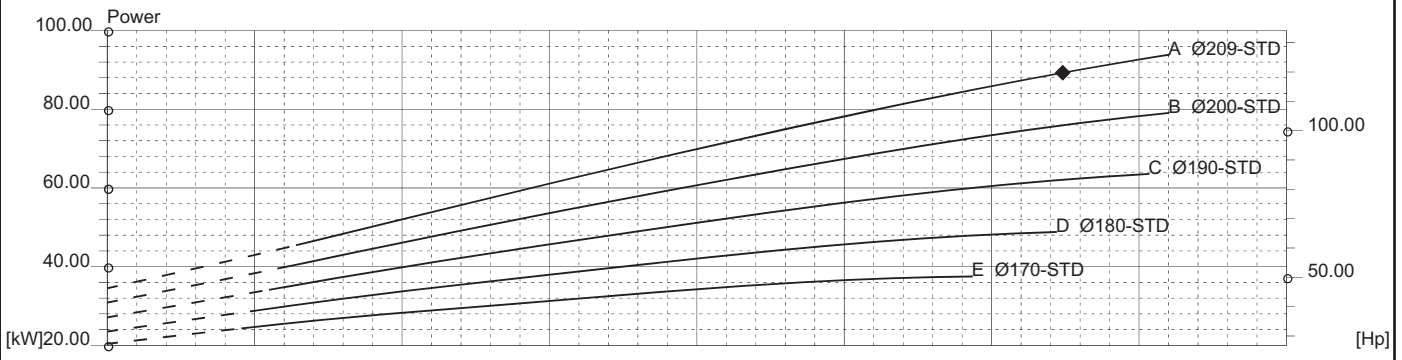
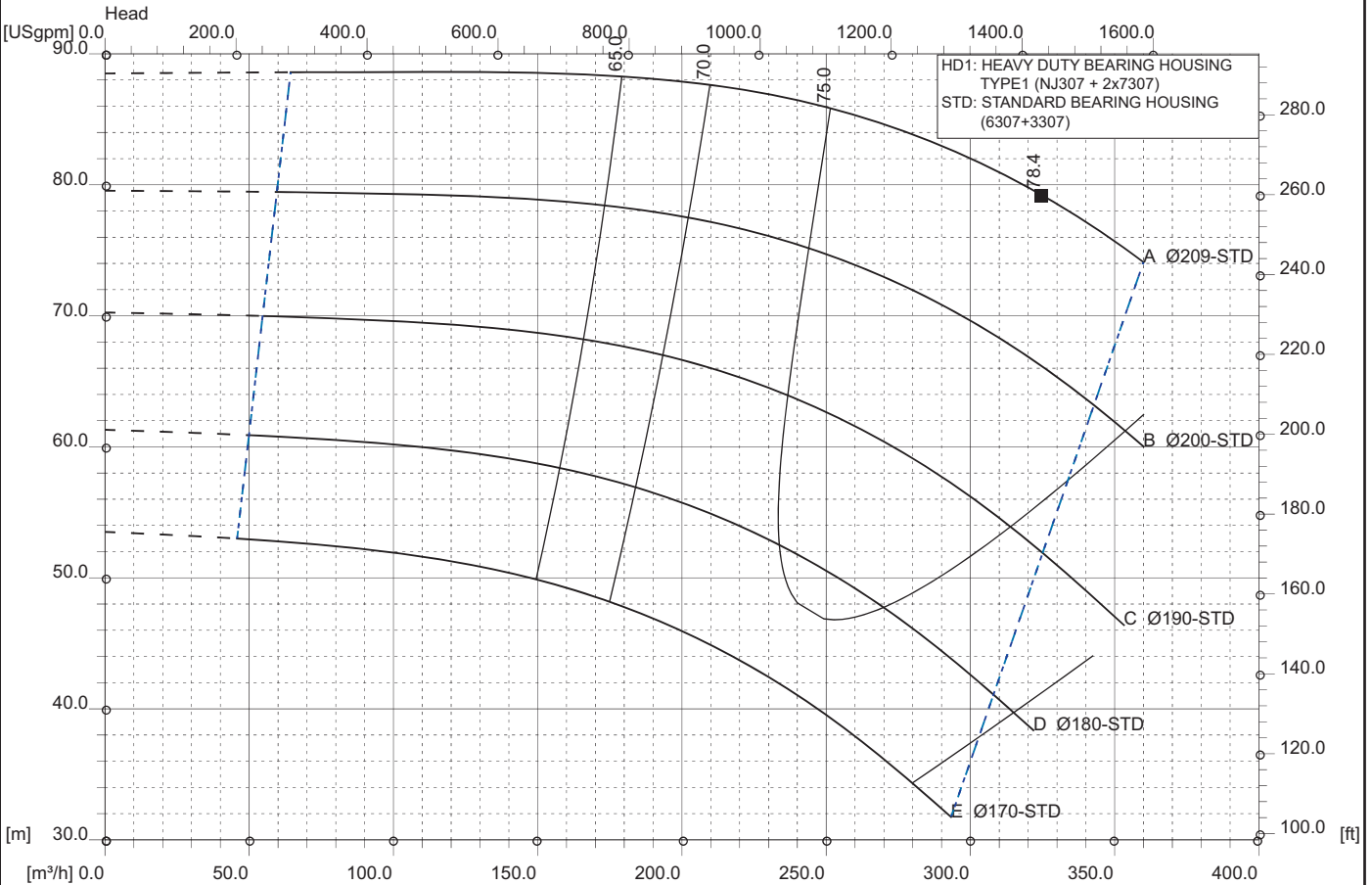


RD 100-20 2P 60Hz
 3540 [rpm]
 1 Stage

Curve N.
T-0846

Max. diameter 209 [mm]	Min. diameter 165 [mm]	Suction Ø 125 [mm]	Discharge Ø 100 [mm]
----------------------------------	----------------------------------	------------------------------	--------------------------------

Density 1 and viscosity 1 cSt Replace any previous edition



Comments
For pumps working with liquids having specific gravity higher than 1.15 and viscosity higher than 200 cSt, please contact the Technical Dept.

Diffuser	Impeller	NS 40	SSS 237	Author	Date Nov8,2017	Revision
----------	----------	-----------------	-------------------	--------	--------------------------	----------